

# Speaking the Same Language: Developing a Glossary of Terms for Social Prescribing

---



**Dr Simon Newstead & Professor Carolyn Wallace, University of South Wales, Wales School for Social Prescribing Research (WSSPR)**

**Amber Pringle, Bethan Jenkins & Dr Amrita Jesurasa, Primary Care Division, Public Health Wales**

# What is Social Prescribing?

- Various models and descriptions of social prescribing used by the nations of the UK
  - **Within Wales** social prescribing uses a cross-sector working practice & a “no wrong door” approach
  - Defined as: *“connecting citizens to community support to better manage their health & well-being”*

(Rees et al, 2019)

- **SP = Umbrella term** – pathway that support & empower via engagement with community-based assets.

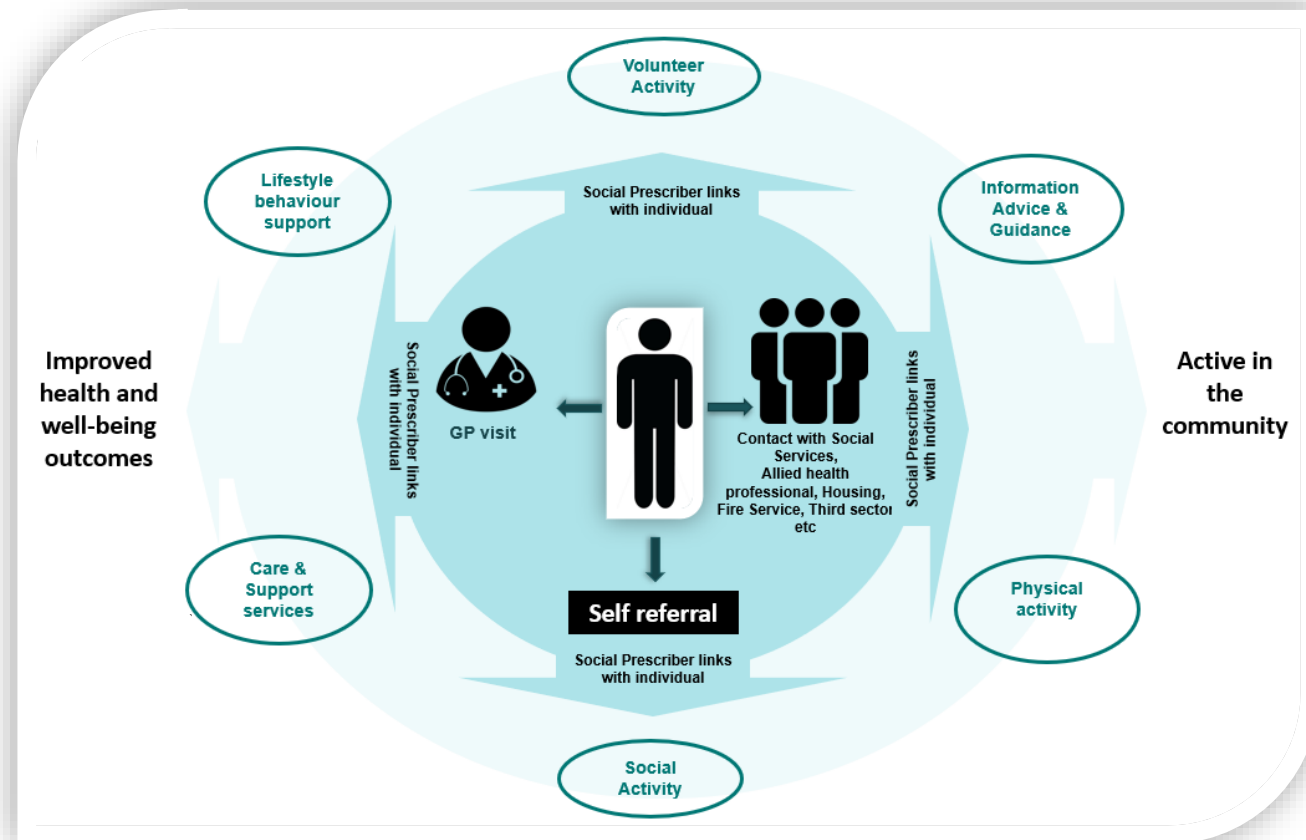


Figure 1. Model of social prescribing in Wales. (Wallace et al., 2021)

# The Need for a Glossary of Terms for Social Prescribing

---

- **Social prescribing has seen a period of growth and development over the last decade**

(Bertotti et al., 2018; Morse et al., 2022; Rempel et al., 2017).

- Resulted in diverse and confusing terminology
  - Creates barriers to engagement & impairs communication.
- **A need for a glossary** (Wallace et al., 2018, 2021)
    - Provide clarity on the terminology used
    - Aid the standardisation of social prescribing language
    - Facilitate communication
  - **Research was conducted by WSSPR & PHW with the aim of:**
    - Identifying the terminology associated with social prescribing
    - Producing a glossary of terms for social prescribing (Newstead et al., *Release Pending 2023*).



# Development of the glossary of terms

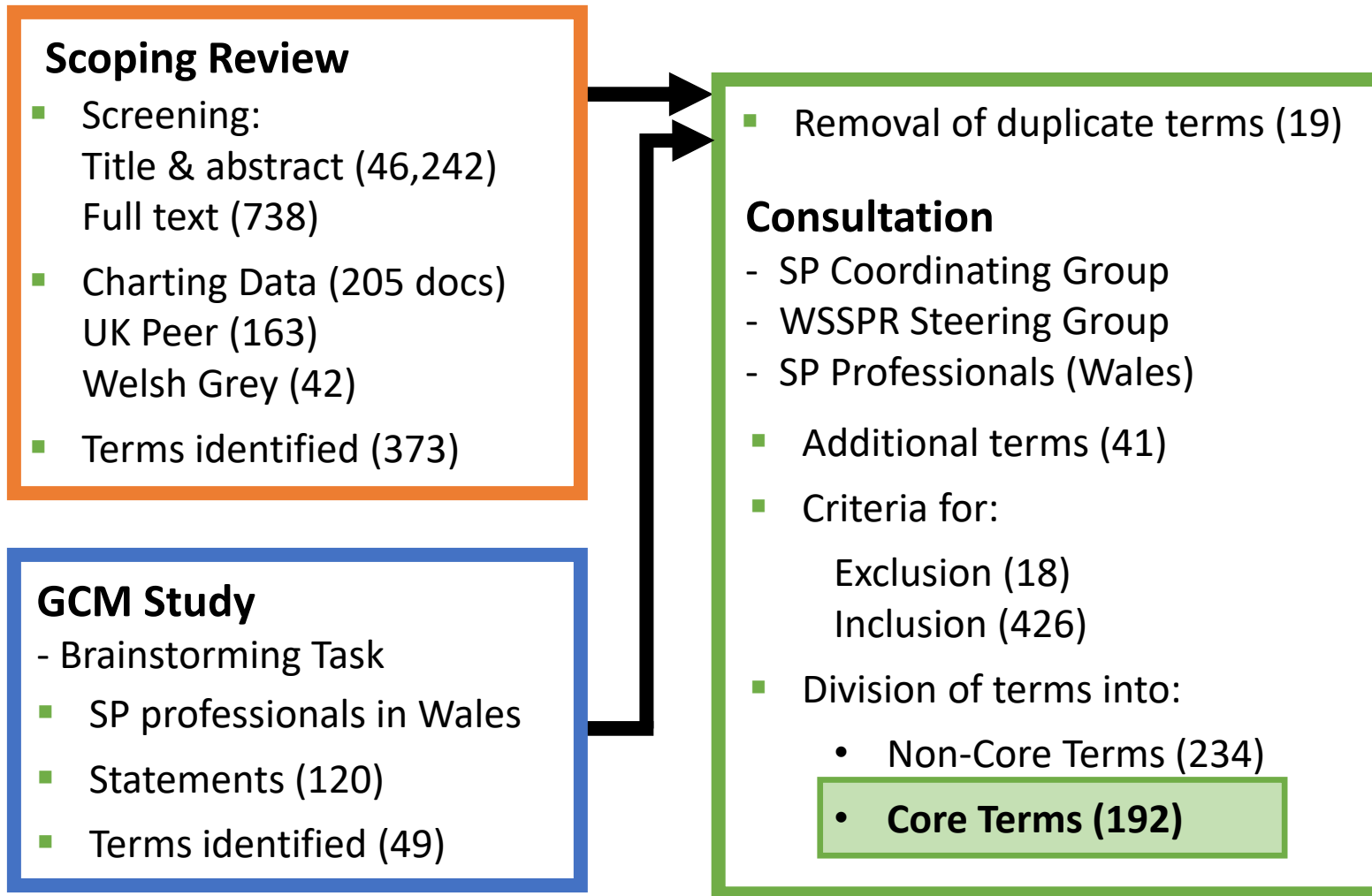


Figure 2. Identification and classification of social prescribing terminology for inclusion in the glossary of terms.

# Development of the glossary of terms

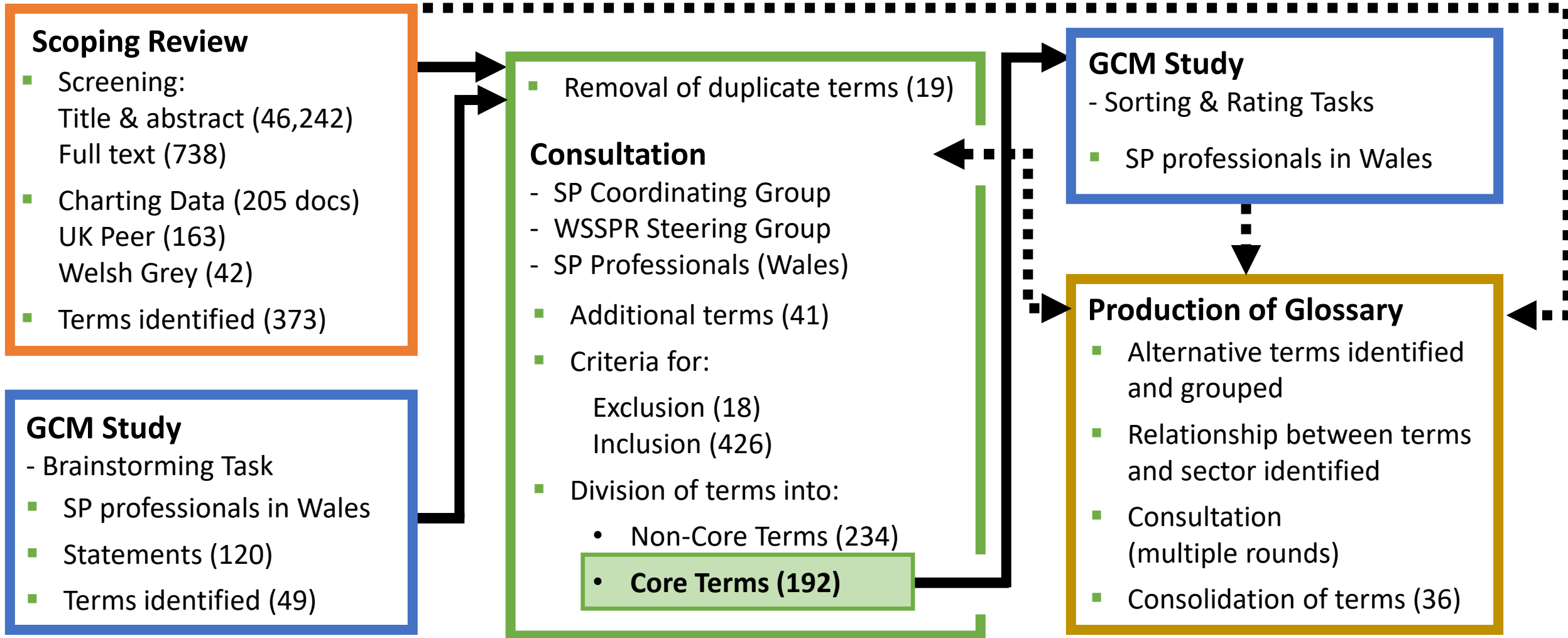


Figure 2. Identification and classification of social prescribing terminology for inclusion in the glossary of terms.

# Scoping Review

- Peer-reviewed articles (UK) and Grey Literature (Wales)
  - Screening:
    - Title & abstract (46,262)
    - Full text (738)
  - Data charted from 205 documents (163 peer-reviewed articles + 42 grey literature).
    - Terms
    - Location in the UK
    - Authored perspective
  - 373 Terms identified

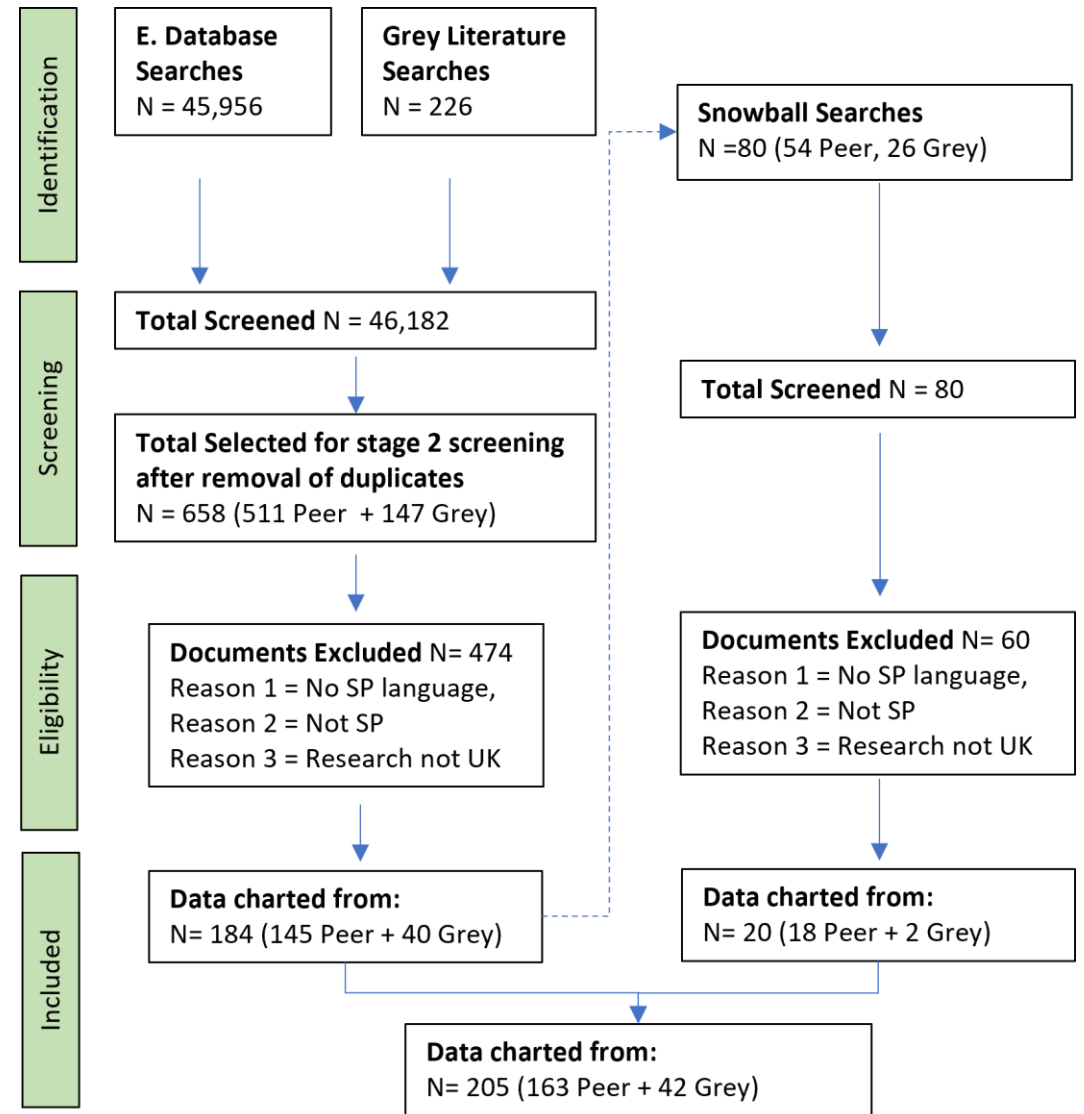
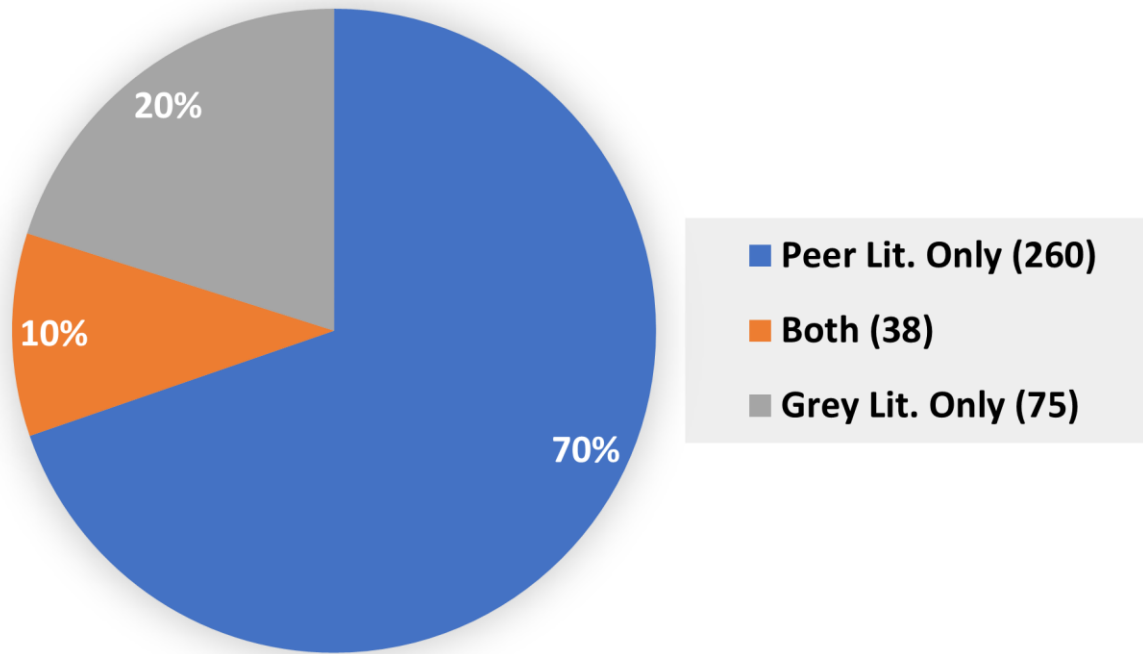


Figure 3. PRISMA diagram of scoping review

(Newstead et al., *Under Review*).

# Scoping Review – Terms by Source



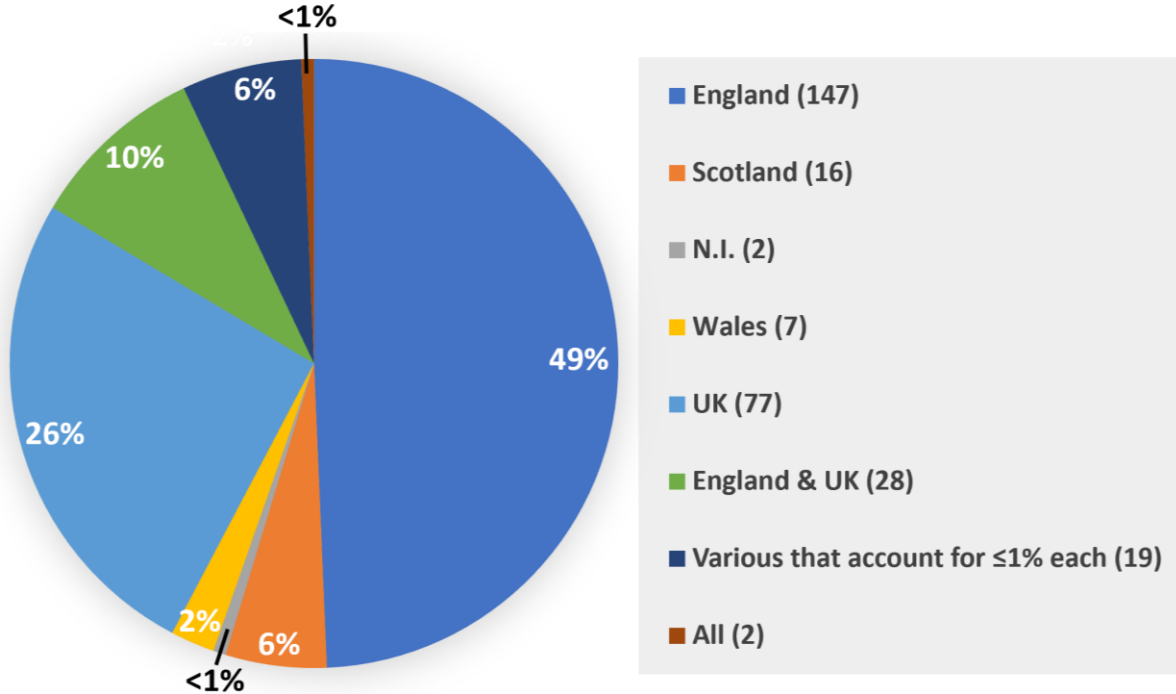
- Total number of terms Peer = 298
- Total number of terms Grey = 113
- 70% of terms identified occurred solely in peer-reviewed literature
- 20% of terms identified occurred solely in Welsh grey literature
- Overlap of 10% across both sources.

**Figure 4. Scoping review terms by source.**

(Newstead et al., *Under Review*).

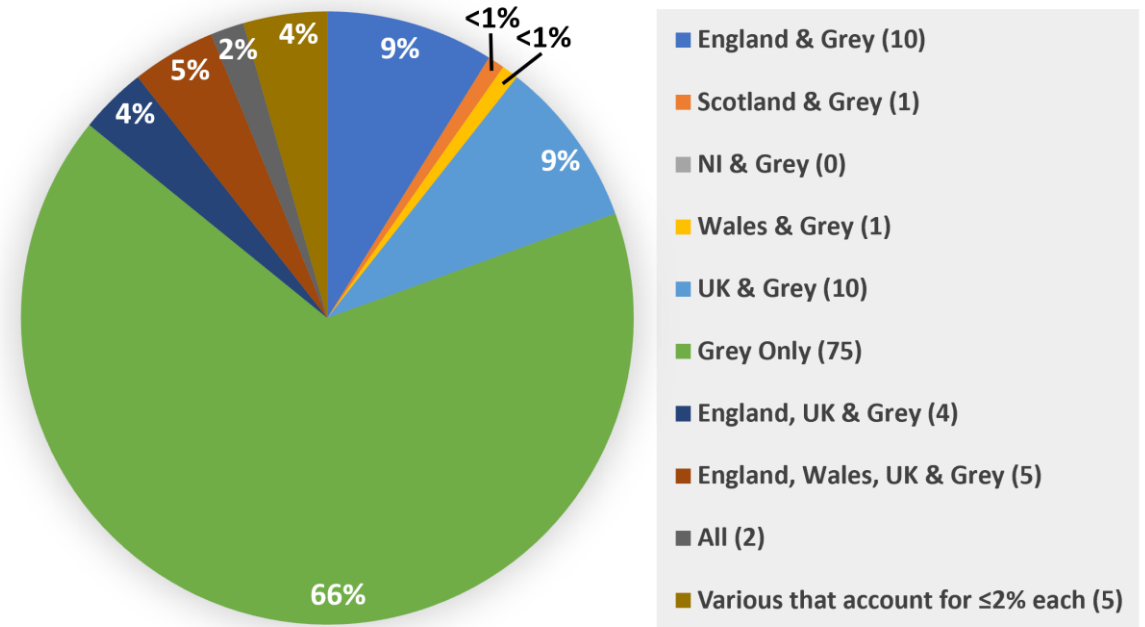
# Scoping Review- Terms by Location

Peer-reviewed literature (298 terms)



- 49% solely in literature based in England
- 26% solely in literature based across UK
- 10% crossover - in literature based across UK & England
- 'social prescribing and 'link worker' - all nations

Grey literature (113 terms)

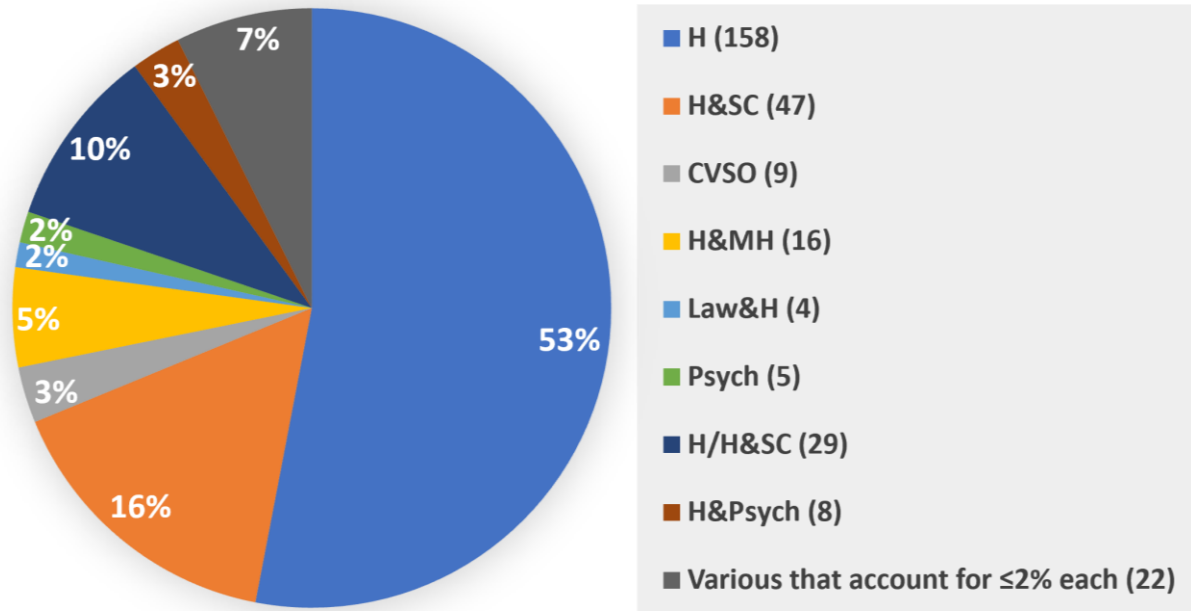


- 66% occurred solely in Welsh grey literature
- Highest co-occurrence with literature based across UK & England (9% each)
- Little co-occurrence with other nations of UK



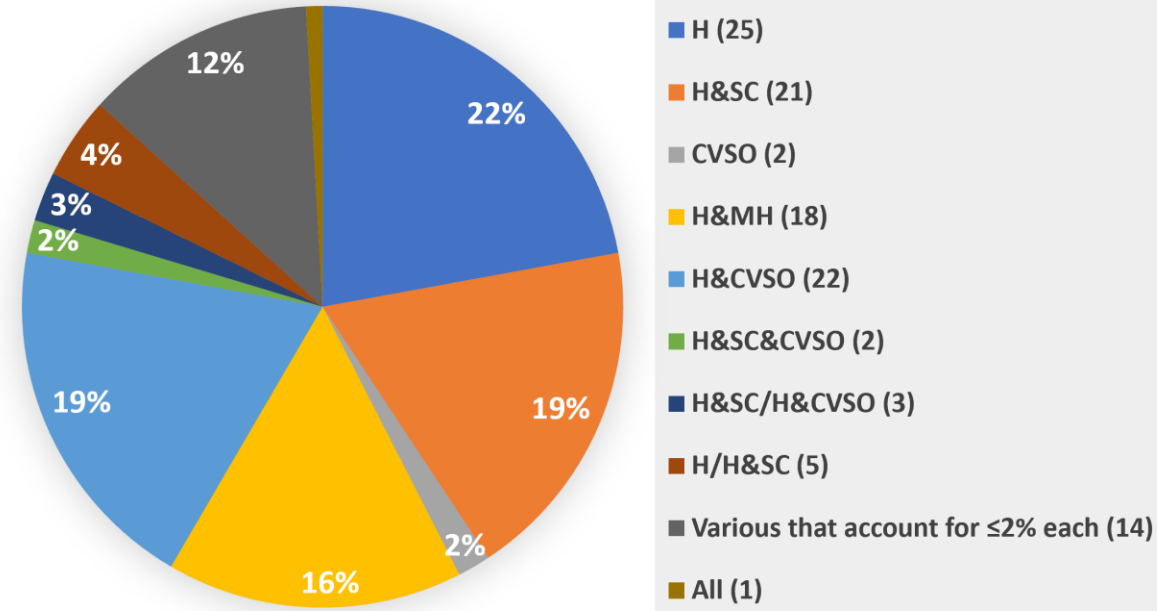
# Scoping Review- Terms by Authored Perspective

Peer-reviewed literature (298 terms)



- 53% solely from HC perspective
- 36% partially from HC perspective
- 5% authored with no HC perspective (3% CVSO)

Grey literature (113 terms)



- 22% solely from HC perspective
- 63% partially from HC perspective
- 2% no HC perspective
- 24% Partially from CVSO perspective

# Group Concept Mapping Study

- **Brainstorming task** – Prompt: "A term or phrase used within the social prescribing pathway is..."
  - Statements (120)
  - Terms (49)
- **Sorting Task - Core terms**
  - 6 clusters

‘Principles underpinning social prescribing systems’ ranked highest for usefulness & relevance
- **Rating tasks**
  - Usefulness in everyday practise
  - Relevance to social prescribing

- Data & demographic info used to identify

sector-specific preferences for terms

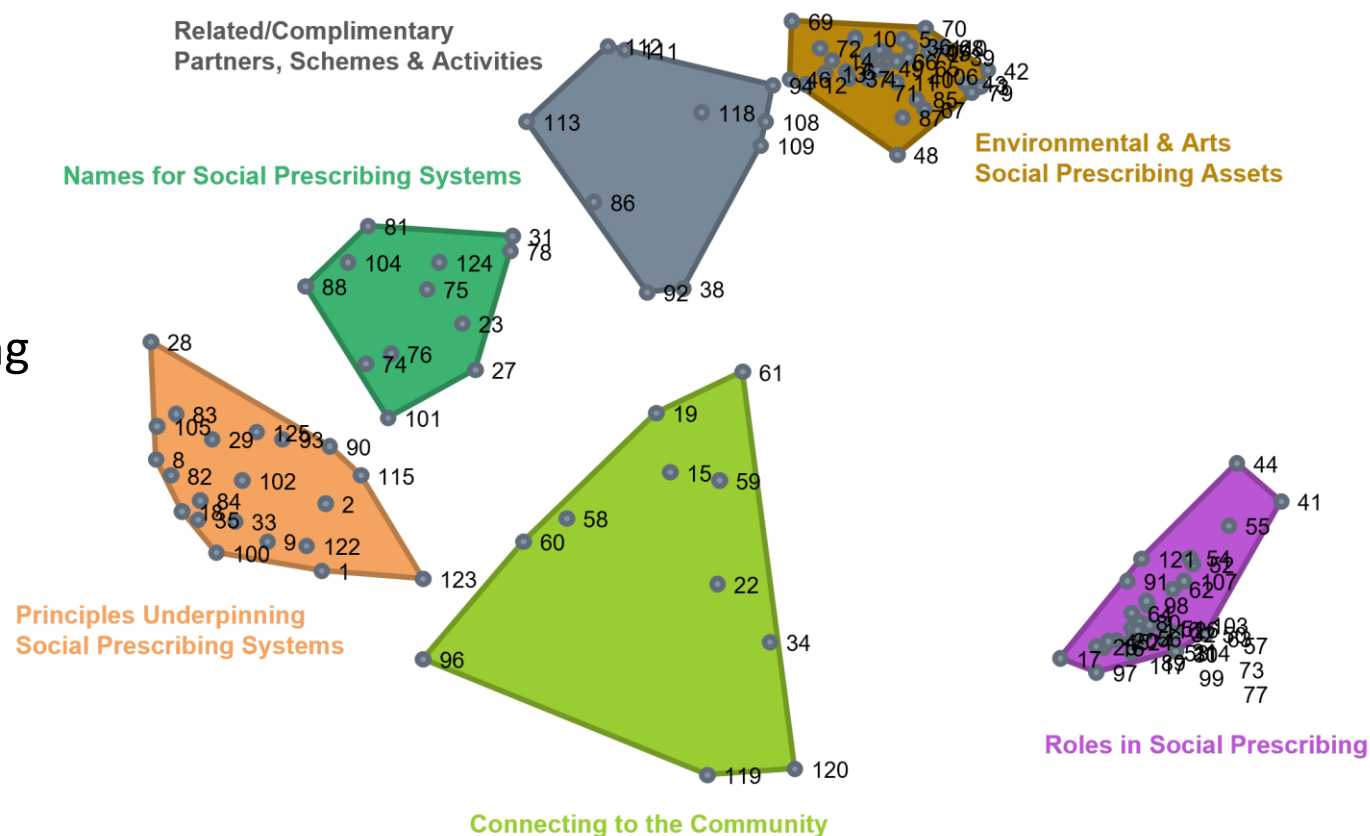


Figure 9. Cluster Map of Core Social Prescribing Terms (n=29). (Newstead et al., In Preparation).

# Development of the Glossary of Terms

---

- Clarify and facilitate the standardisation of social prescribing language.
- Most glossaries are a list of 25-50 words (Tetlow et al., *In Preparation*).
  - Diversity of terminology necessitated a different approach. **Core Terms (192) → ‘Suggested Terms’ (36)**
  - Description
  - Alternative terms, sector-specific preferences for terms
  - Relationship of terms to each other
- The glossary available as a PDF and via a dedicated website [www.socialprescribing.wales](http://www.socialprescribing.wales) (launching Oct 2023)
  - Language Welsh/English
  - Different versions for target audiences: Professional view / Public View / Easy-Read – learning disabilities
  - Future iterations will likely be needed as the landscape evolves.
    - Website will facilitate data capture & dissemination of updates.

# The Glossary of Terms – Navigation Table

[Action Planning](#)

[Asset-Based Approach](#)

[Asset Mapping](#)

[Blue Referral](#)

[Books on Referral](#)

[Buddy System](#)

[Building the Practice](#)

[Care Navigator](#)

[Community Assets](#)

[Community Support Hubs](#)

[Community & Voluntary Sector Organisations](#)

[Co-Production](#)

[Creative Referral](#)

[Digital Social Prescribing](#)

[Education on Referral](#)

[Exercise Referral](#)

[Green Referral](#)

[Health Facilitator](#)

[Holistic](#)

[Nature-Based Interventions](#)

[Person-Centred Approach](#)

[Practice-Managed Scheme](#)

[Referral](#)

[Signposting & Active Signposting](#)

[Social Cafes](#)

[Social Prescribing](#)

[Social Prescribing Approaches](#)

[Social Prescribing Champion](#)

[Social Prescribing Model](#)

[Social Prescribing Outcome Principles](#)

[Social Prescribing Pathway](#)

[Social Prescribing Practitioner](#)

[Statutory Services](#)

[Welfare Support Referral](#)

[Well-Being](#)

[What Matters Conversation](#)

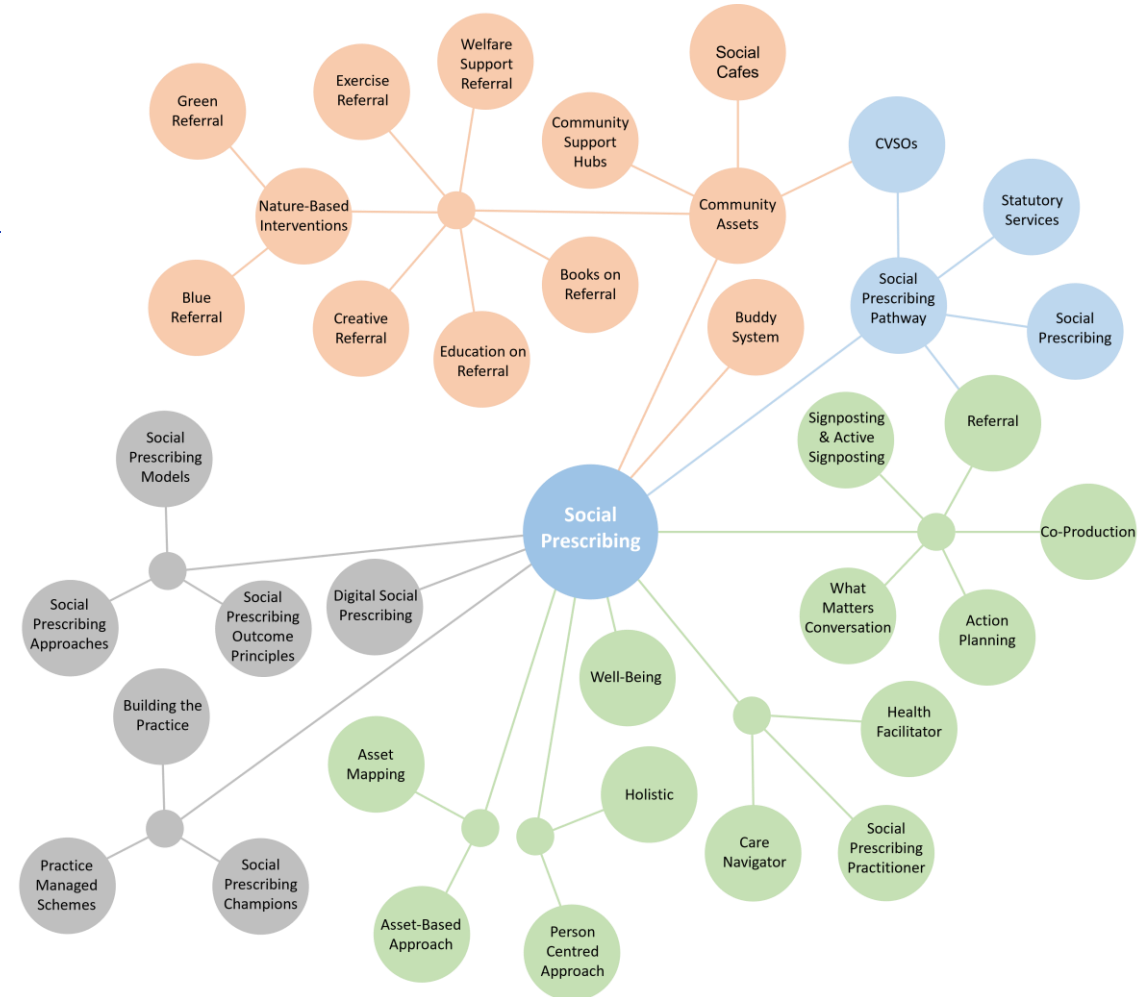


Figure 10. Navigation table of terms, professional view. [www.socialprescribing.wales](http://www.socialprescribing.wales)

# The Glossary of Terms – Pathway Flowchart

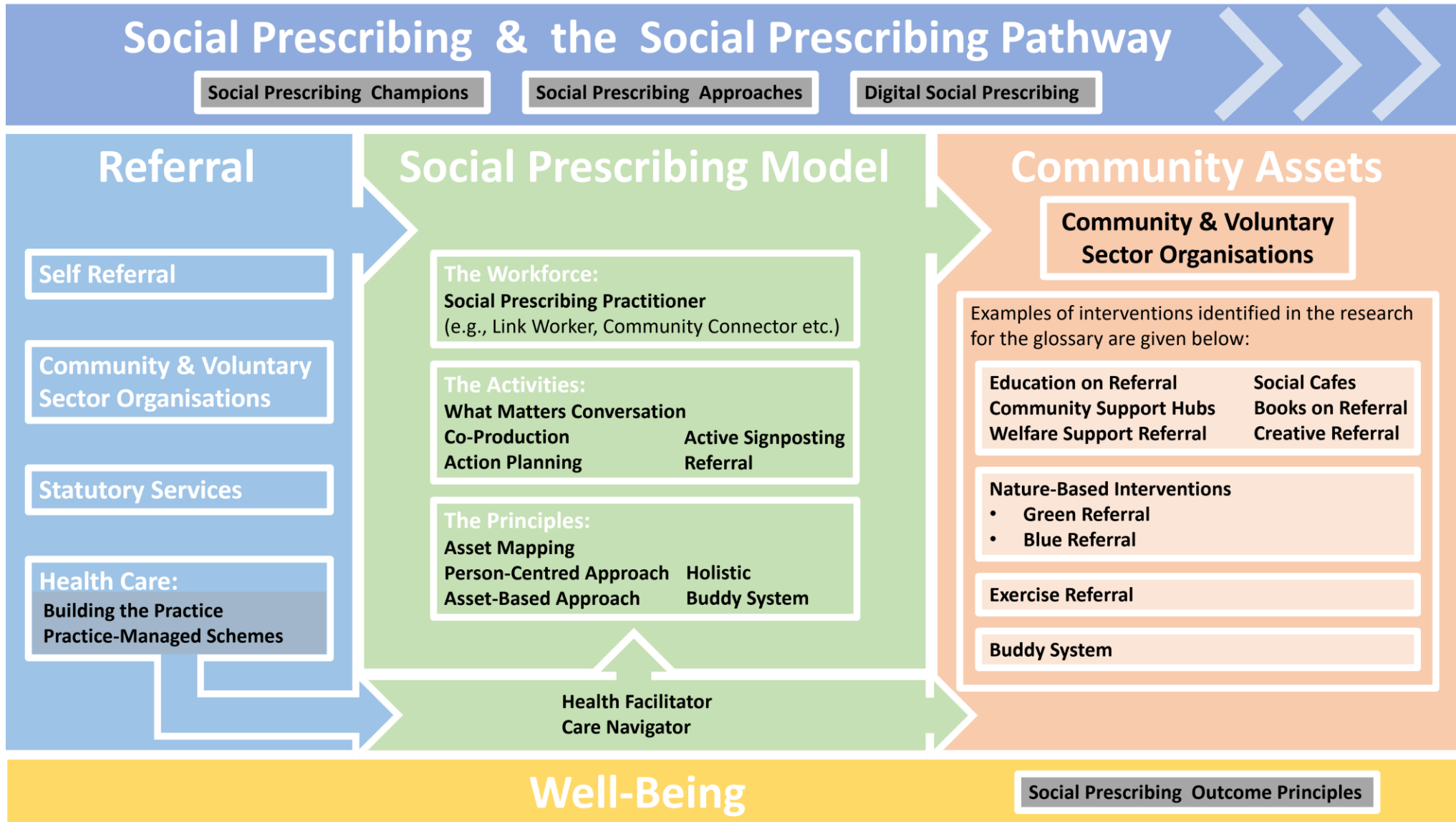


Figure 11. Pathway flowchart of terms (Newstead et al., *Release Pending 2023*).

# The Glossary of Terms – Term Descriptions

---

## Social Prescribing Practitioner <sup>C, GCM, SR</sup>

**Description:** **Social prescribing practitioner** is an umbrella term for someone who assists individuals with identifying their non-medical needs through a [what matters conversation](#), and helps them [co-produce](#) an [action plan](#) and access local [community assets](#) and sources of support. If they identify a potential medical need they may also refer to GP or pharmacist. **Social prescribing practitioners** will work with individuals to find activities tailored to their preferences and needs, explore barriers and challenges to attending, and encourage ongoing participation. While there are preferred terms for the **social prescribing practitioner** role within sectors, they may also be known by a variety of terms that can be specific to the organisation in which they work. **Social prescribing practitioners** can be employed by a range of different organisations, such as local authorities, health boards or [Community & Voluntary Sector Organisations](#).

**Alternative Terms:** **Community connector** <sup>CVSO</sup>, **community co-ordinator** <sup>SC</sup>, community health champion, community link officer, community links practitioner, **community navigator** <sup>CVSO</sup>, facilitator, health adviser, health broker, health connectors, link co-ordinator, **link worker** <sup>HC</sup>, **local area coordinator** <sup>SC</sup>, **local asset coordinator** <sup>SC</sup>, non-medical link worker, referral agent, referral worker, referrer, social prescriber, social prescribing coordinator, social prescription officer, well-being advisor, well-being community co-ordinator, well-being co-ordinator, well-being links advisor, well-being worker.

# The Glossary of Terms – Connected Terms

**Connected Terms:** [Action planning](#), [asset mapping](#), [care navigator](#), [community assets](#), [co-production](#), [health facilitator](#), [holistic](#), [person-centred approach](#), [referral](#), [signposting & active signposting](#), [social prescribing](#), [social prescribing models](#), [social prescribing pathway](#), [well-being](#), [what matters conversation](#).

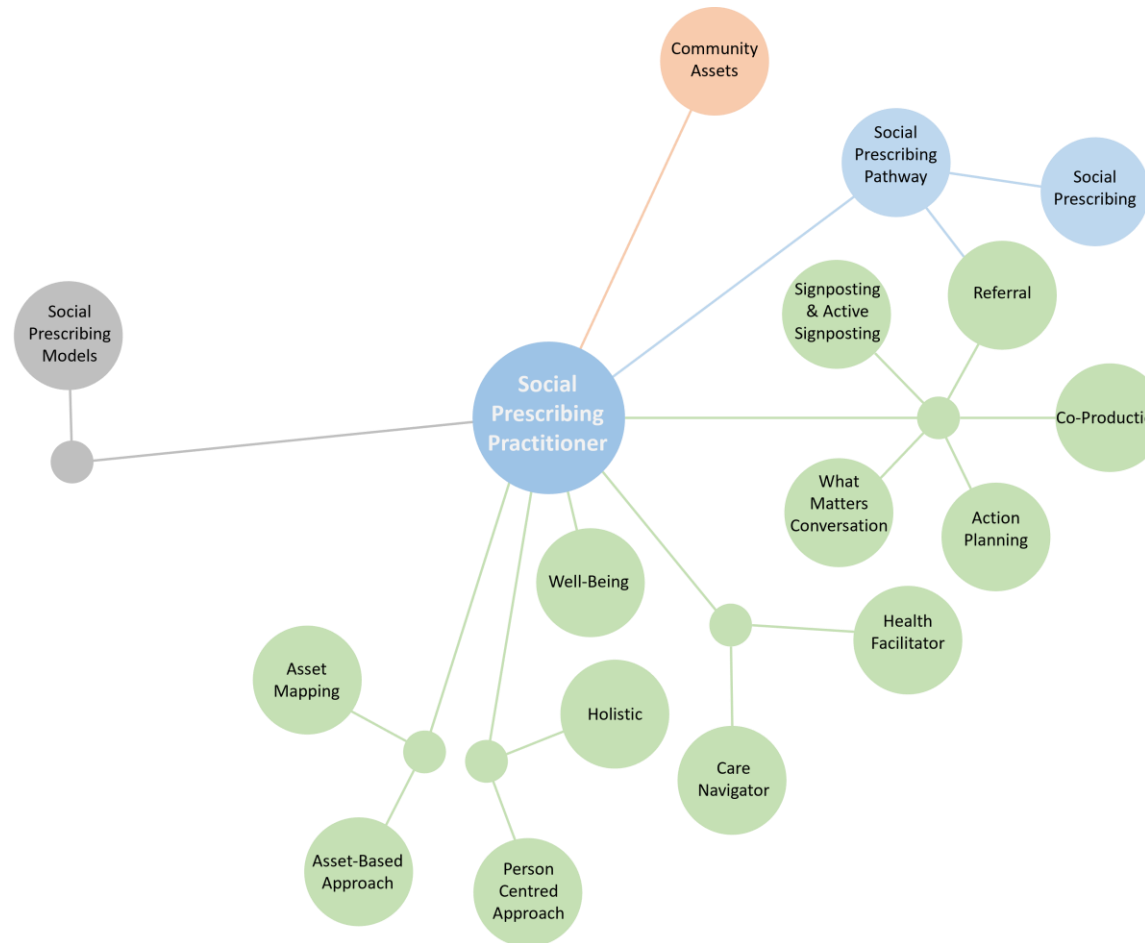
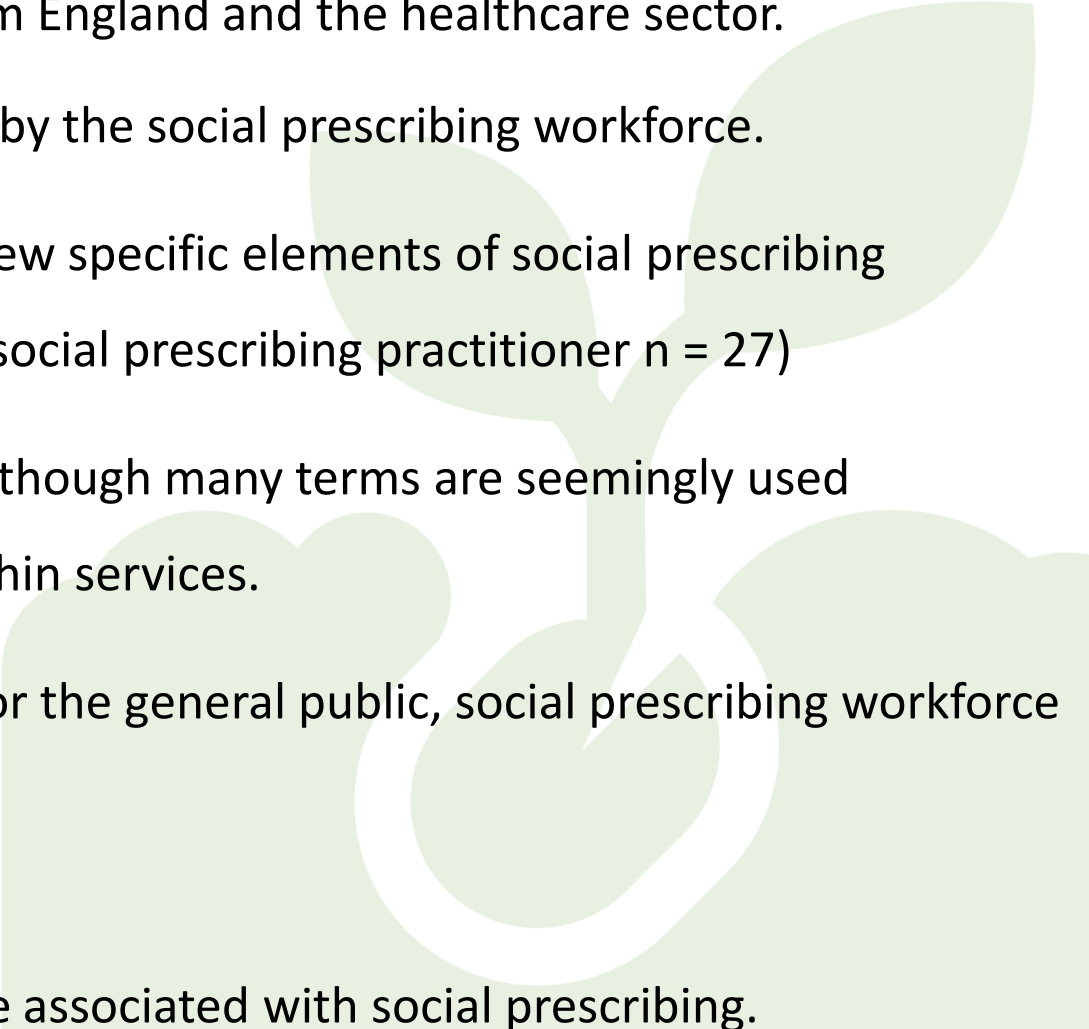


Figure 13. Connected terms. [www.socialprescribing.wales](http://www.socialprescribing.wales)

# Summary

---

- Largest proportion of articles and terms originate from England and the healthcare sector.
    - May not reflect the terminology commonly used by the social prescribing workforce.
  - Many terms identified describe/related to the same few specific elements of social prescribing (e.g., Process of social prescribing n = 28, Role of the social prescribing practitioner n = 27)
  - Some sector-specific preferences for certain terms, although many terms are seemingly used interchangeably with little standardisation across/within services.
  - The glossary provides an informative reference tool for the general public, social prescribing workforce and commissioners (both within Wales and beyond).
    - Improve understanding
    - Facilitate the standardisation of the language associated with social prescribing.
- 



# References & Links

- Bertotti, M., Frostick, C., Hutt, P., Sohanpal, R., & Carnes, D. (2018). A realist evaluation of social prescribing: an exploration into the context and mechanisms underpinning a pathway linking primary care with the voluntary sector. *Primary Health Care Research & Development (Cambridge University Press / UK)*, 19(3), 232–245.
- Morse, D. F., Sandhu, S., Mulligan, K., Tierney, S., Polley, M., Chiva Giurca, B., Slade, S., Dias, S., Mahtani, K. R., Wells, L., Wang, H., Zhao, B., de Figueiredo, C. E. M., Meijs, J. J., Nam, H. K., Lee, K. H., Wallace, C., Elliott, M., Mendive, J. M., ... Husk, K. (2022). Global developments in social prescribing. *BMJ Global Health*, 7(5), e008524.
- Rempel, E. S., Wilson, E. N., Durrant, H., & Barnett, J. (2017). Preparing the prescription: A review of the aim and measurement of social referral programmes. *BMJ Open*, 7(10).
- Newstead, S, Elliott, M., Cavanagh, D., Tetlow, S., Wallace, C. (Under Review). Speaking the Same Language: A Scoping Review to Identify Social Prescribing Terminology.
- Newstead, S., Pringle, A., Jenkins, B., Jesurasa, A., Wallace, C. (Release Pending 2023) *Developing an Evidence-based Glossary of Terms for Social Prescribing – A Report*. Public Health Wales, Wales School for Social Prescribing.
- Newstead, S., Pringle, A., Jenkins, B., Jesurasa, A., Wallace, C. (In Preparation) The Development of a Glossary of Terms for Social Prescribing in Wales.
- Rees S, Thomas S, Elliott M, Wallace C, 2019. Creating community assets/social capital within the context of social prescribing. Findings from the workshop held 17/7/2019. WCVA, Cwm Taf Morgannwg University Health Board, University of South Wales
- Tetlow, S., Newstead, S., Wallace, C. (In Preparation). A Scoping Review of Glossary of Terms.
- Wallace, C. et al. What Does Good Look Like? (2018) Setting its Outcome Principles and Framework for Wales. <https://www.iwa.wales/click/2018/10/social-prescribing-how-to-create-a-sustainable-journey/>.
- Wallace, C., Davies, M., Elliott, M., Llewellyn, M., Randall, H., Owens, J., Philips, J., Teichner, L., Sullivan, S., Hannah, V., Jenkins, B., & Jesurasa, A. (2021). *Understanding Social Prescribing in Wales: A Mixed Methods Study*.

- **My contact details: [simon.newstead@southwales.ac.uk](mailto:simon.newstead@southwales.ac.uk)**
- **[www.socialprescribing.wales](http://www.socialprescribing.wales) Due for launch October 2023**

