

Speaking the Same Language: Developing an Interactive Glossary of Terms for Social Prescribing in Wales



GIG
CYMRU
NHS
WALES

Iechyd Cyhoeddus
Cymru
Public Health
Wales



Canolfan
PRIME Cymru
Wales PRIME
Centre

Dr Simon Newstead & Professor Carolyn Wallace

University of South Wales, Wales School for Social Prescribing Research (WSSPR)

Amber Pringle, Bethan Jenkins & Dr Amrita Jesurasa

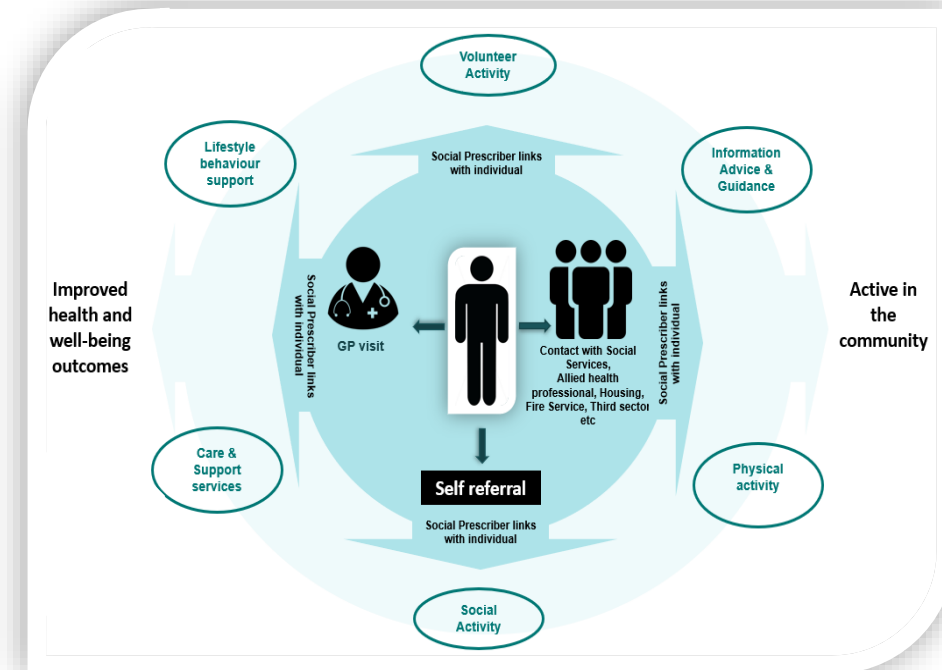
Primary Care Division, Public Health Wales

What is Social Prescribing?

- Various models and descriptions of social prescribing used by the nations of the UK
- **Within Wales** social prescribing uses a cross-sector working practice & a “no wrong door” approach
- Defined as: *“connecting citizens to community support to better manage their health & well-being”*

(Rees et al, 2019)

- **SP = umbrella term**
 - A pathway that:
 - Uses a person-centred approach
 - Support & empower individuals
 - Connect individuals to activities/services in their community



The Need for a Glossary of Terms for Social Prescribing

- The concept of social prescribing is relatively simple – the terminology used can be confusing
- Social prescribing has seen a period of growth and development over the last decade
 - Resulted in diverse and confusing terminology
 - Creates barriers to engagement & impairs communication.
- WSSPR (2018) identified the need for a tool to help:
 - Clarify SP terminology
 - Standardise SP terminology
- WSSPR & PHW committed to the development of a glossary of terms.



Development of the glossary of terms

Scoping Review

- Screening:
 - Title & abstract (46,242)
 - Full text (738)
- Charting Data (205 docs)
 - UK Peer (163)
 - Welsh Grey (42)
- Terms identified (373)

GCM Study

- Brainstorming Task
 - SP professionals in Wales
 - Statements (120)
 - Terms identified (49)

- Removal of duplicate terms (19)

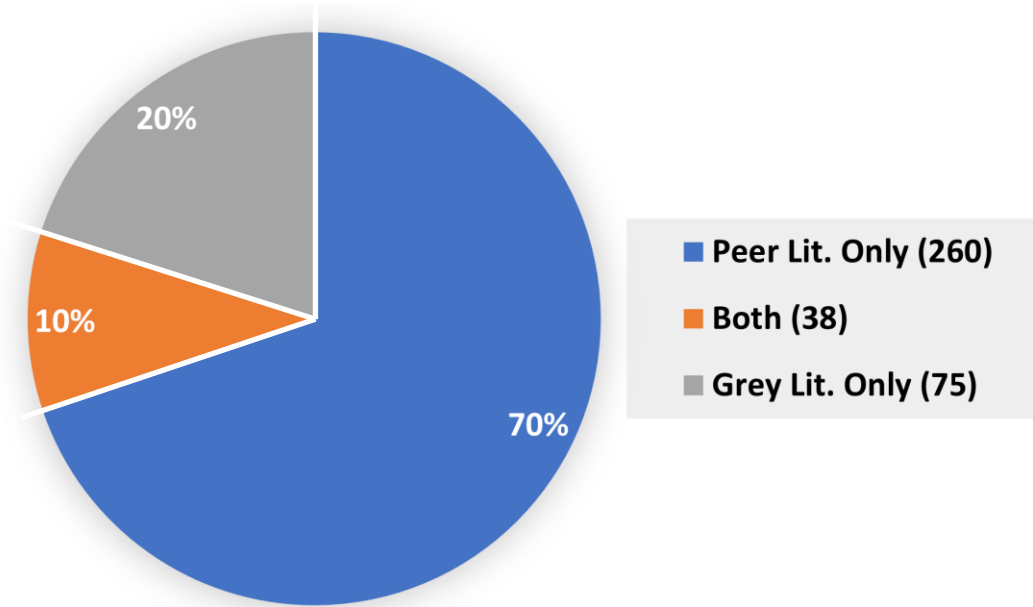
Consultation

- SP Coordinating Group
- WSSPR Steering Group
- SP Professionals (Wales)
- Additional terms (41)
- Criteria for:
 - Exclusion (18)
 - Inclusion (426)
- Division of terms into:
 - Non-Core Terms (234)
 - **Core Terms (192)**

Development of the glossary of terms

Scoping Review

- Screening:
 - Title & abstract (46,242)
 - Full text (738)
- Charting Data (205 docs)
 - UK Peer (163)
 - Welsh Grey (42)
- Terms identified (373)

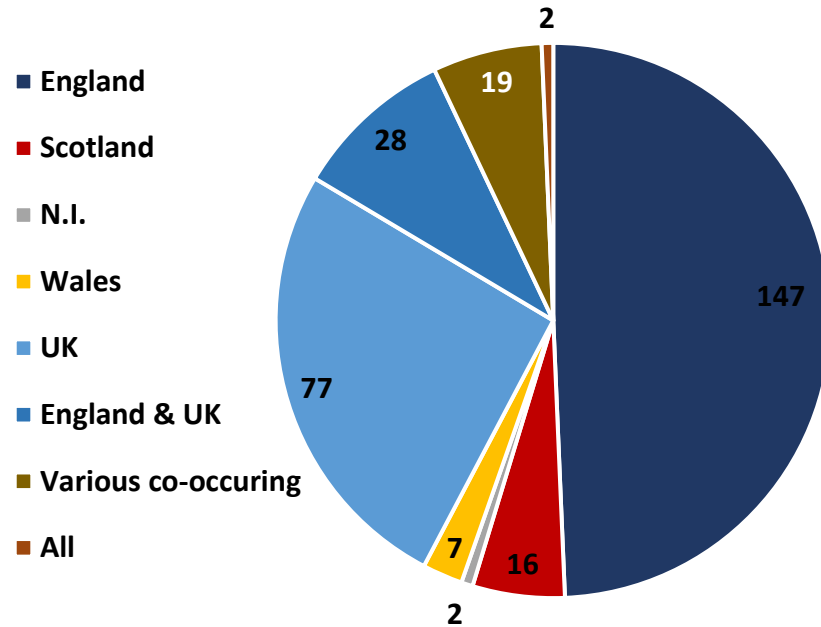


- **373 Terms identified**
 - Terms
 - Location in the UK
 - Authored perspective

- Total number of terms: Peer = 298, Grey = 113
- 80% of terms occurred in peer-reviewed literature
- 30% of terms occurred in Welsh grey literature
- Overlap of 10% across both sources.

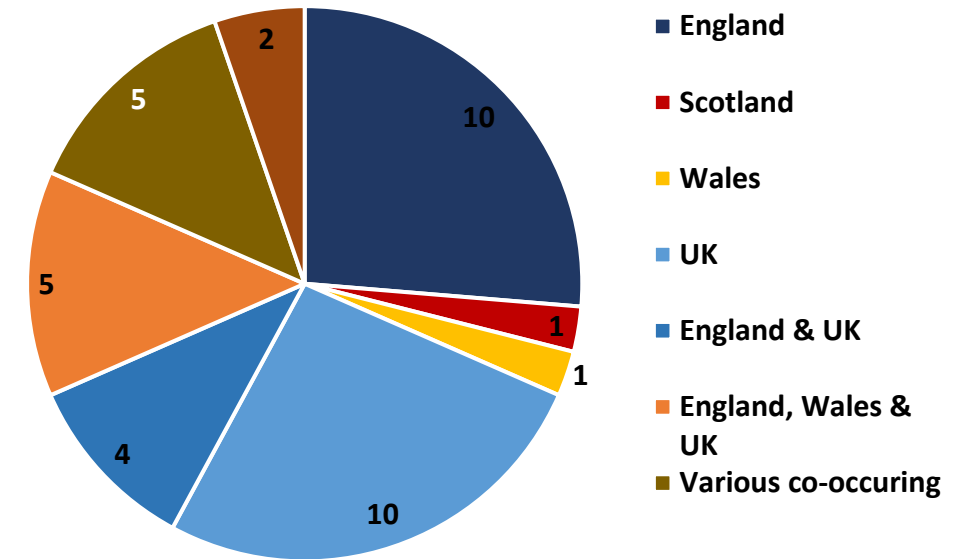
Scoping Review- Terms by Location

Peer-reviewed literature (298 terms)



- Most terms found in articles from England & UK
- Comparatively few terms from other nations of UK
- Only two terms found in all UK nations:
 - 'social prescribing and 'link worker'

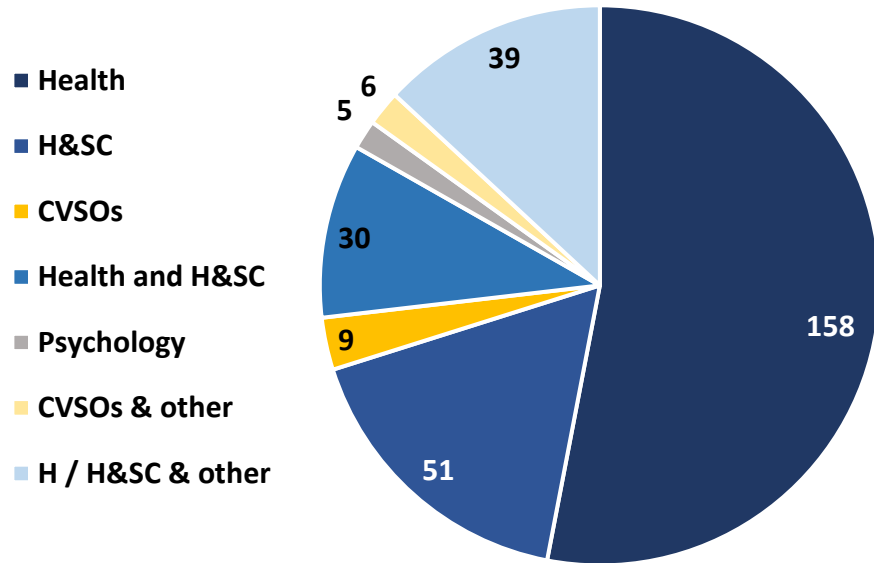
Grey literature – co-occurring (38 terms)



- 1/3rd terms also present in peer-reviewed literature
- Highest co-occurrence in England & UK
 - And England, UK & Wales
 - Little co-occurrence with other nations of UK

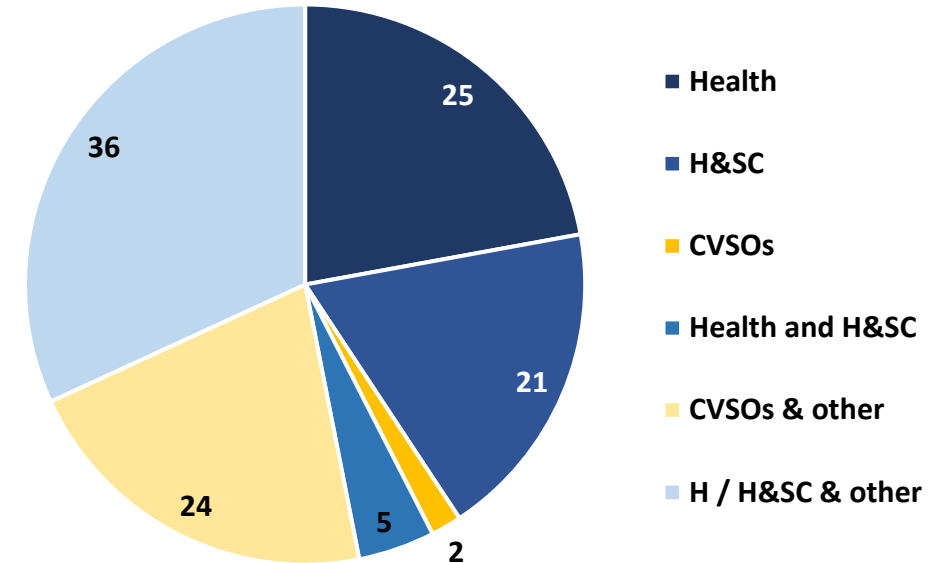
Scoping Review- Terms by Authored Perspective

Peer-reviewed literature (298 terms)



- Largest contributions from H and H&SC perspective
- Very little from CVSO perspective
- Very little from any other perspective (Psychology/MH)

Grey literature (113 terms)



- Largest contributions from H and H&SC perspective
- Substantial contribution from CVSO perspective
- Very little from any other perspective (MH)

Development of the glossary of terms

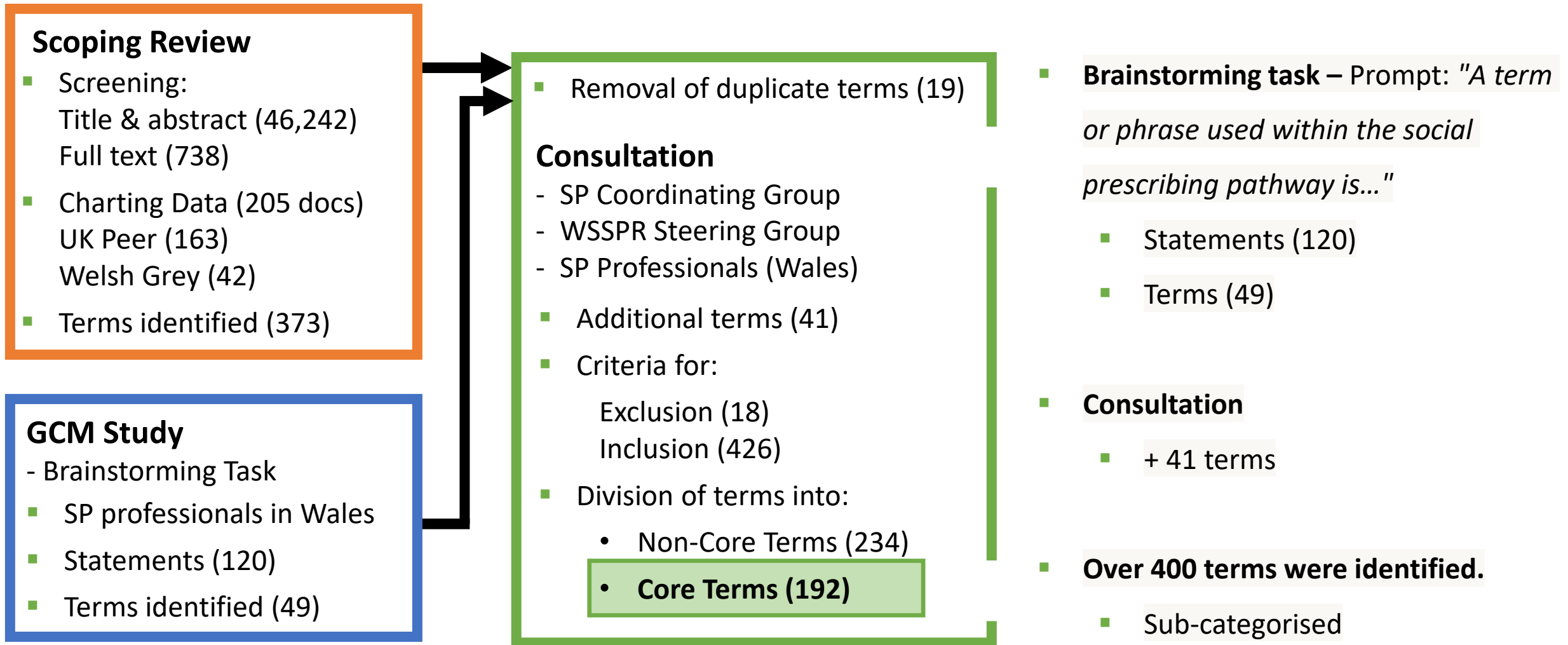


Figure 2. Identification and classification of social prescribing terminology for inclusion in the glossary of terms.

Development of the glossary of terms

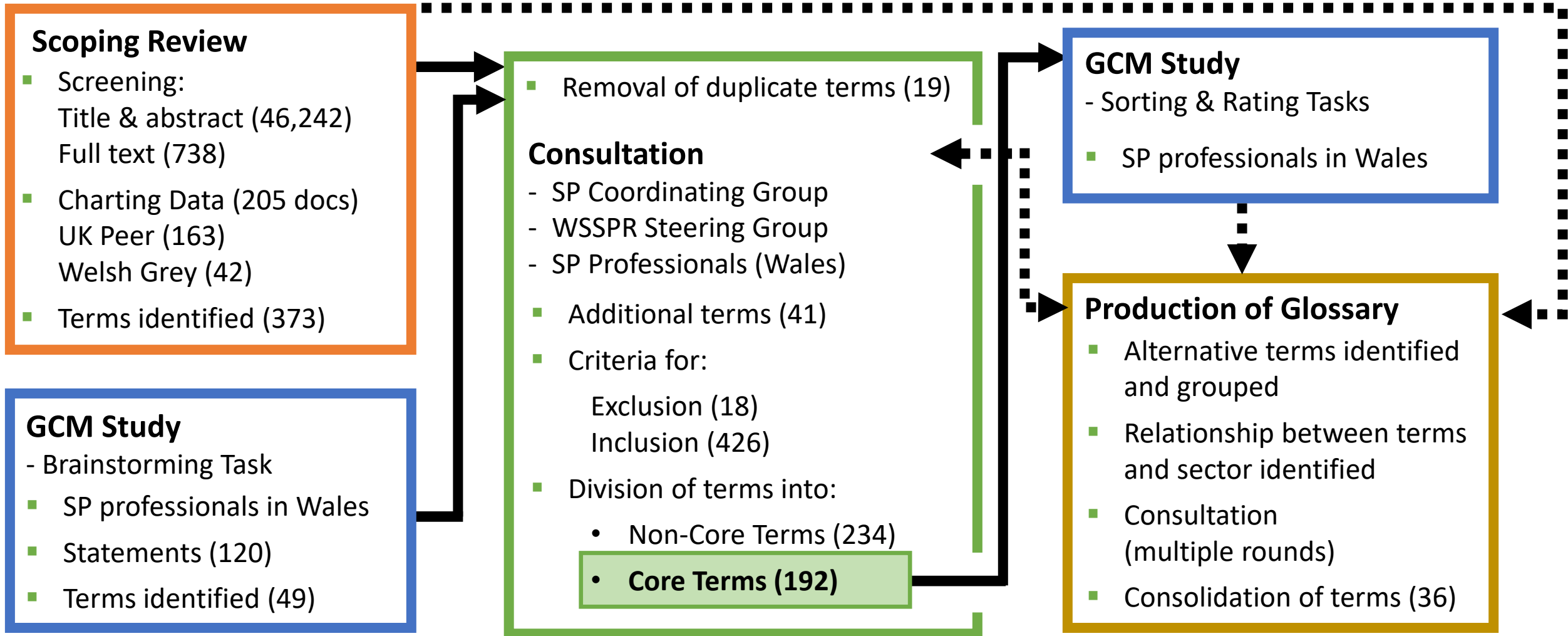
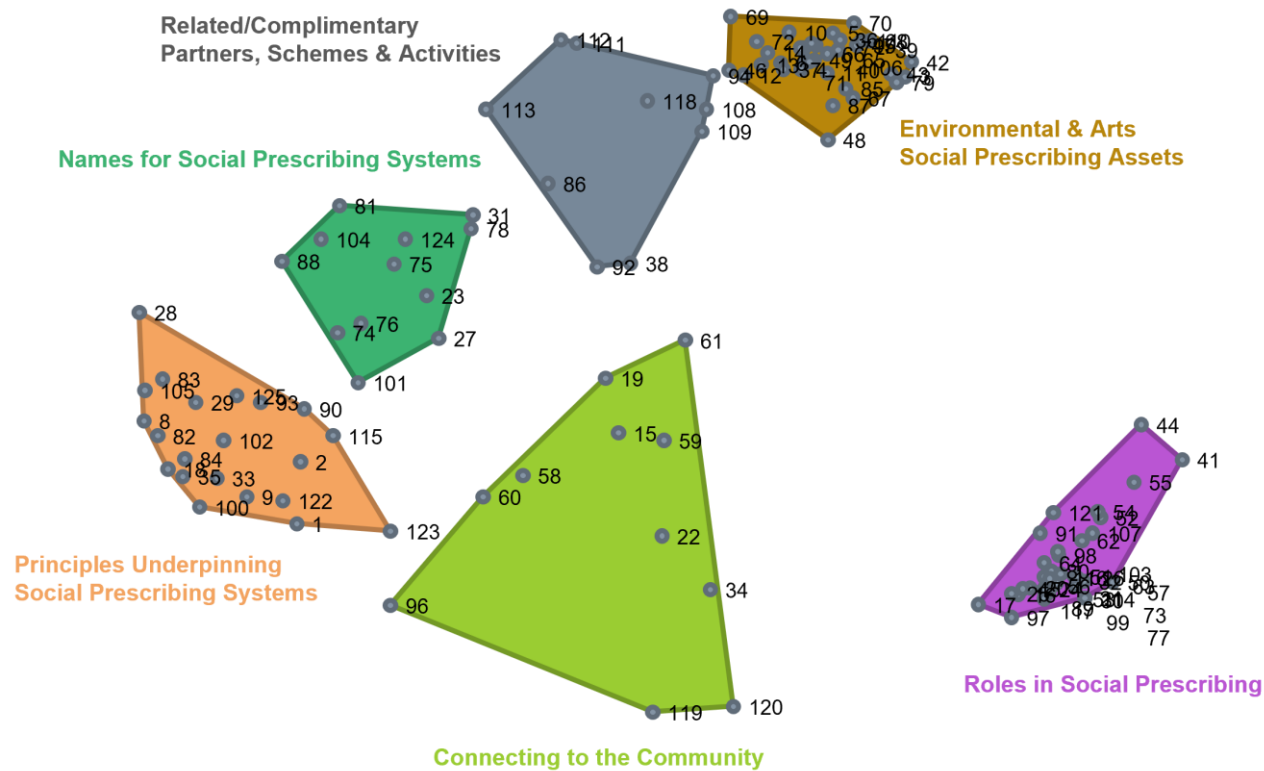


Figure 2. Identification and classification of social prescribing terminology for inclusion in the glossary of terms.

Development of the glossary of terms

- **Sorting Task (Core terms): 6 clusters**
- Relationship & strength of the relationship between terms



GCM Study

- Sorting & Rating Tasks

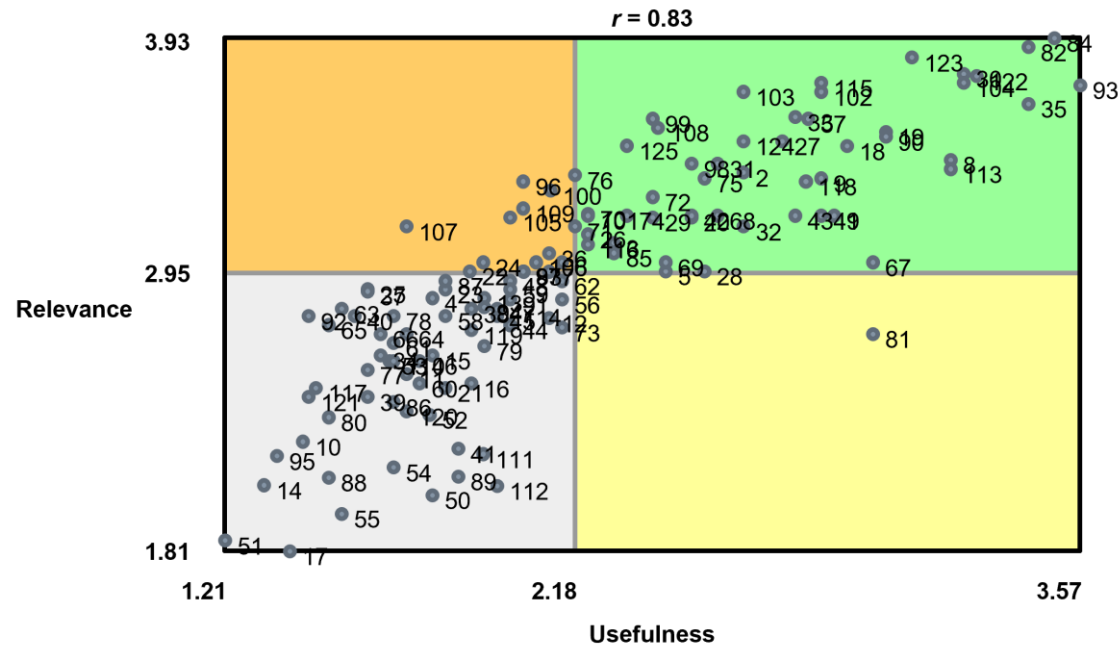
- SP professionals in Wales

Production of Glossary

- Alternative terms identified and grouped
- Relationship between terms and sector identified
- Consultation (multiple rounds)
- Consolidation of terms (36)

Development of the glossary of terms

- **Rating Task (Core terms):**
 - Usefulness in everyday practise
 - Relevance to social prescribing
- Importance (generally and sector-specific)



GCM Study

- Sorting & Rating Tasks

- SP professionals in Wales

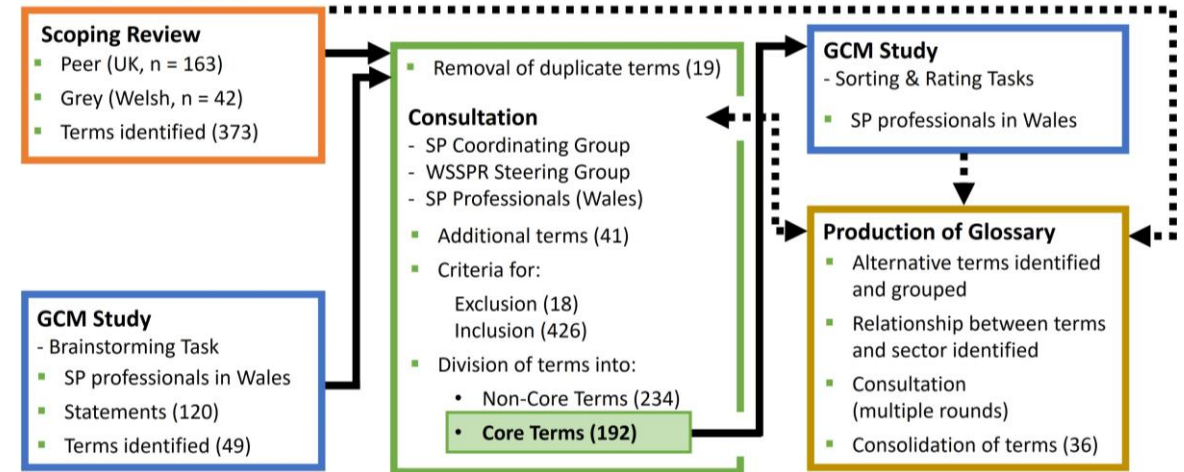


Production of Glossary

- Alternative terms identified and grouped
- Relationship between terms and sector identified
- Consultation (multiple rounds)
- Consolidation of terms (36)

Development of the Glossary of Terms

- Iterative process: used data (S/R & GCM) and feedback from consultation process.



- Most glossaries are a list of 25-50 words

- Diversity and complexity of social prescribing terminology necessitated a different approach.

- Core Terms (192) → 'Suggested Terms' (36)**

- Description
- Alternative terms, sector-specific preferences for terms
- Relationship of terms to each other

Development of the Glossary of Terms

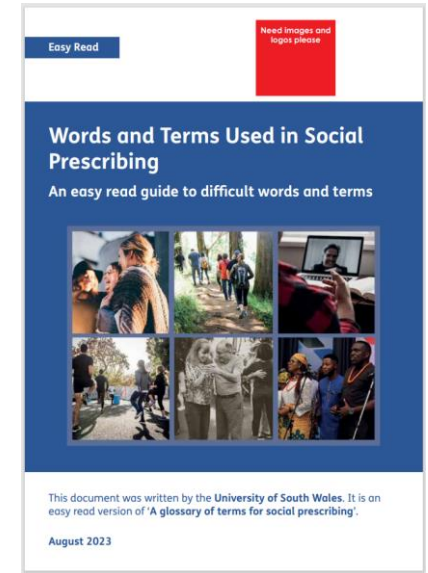
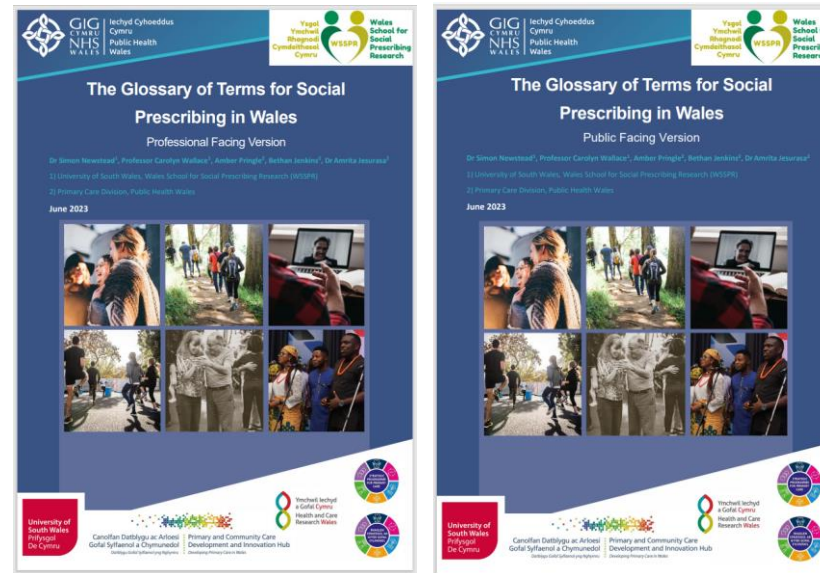
- The glossary is available as:

- An interactive professional-facing PDF

- Due for publication in September/October 2023

- An interactive public-facing PDF

- An interactive easy-read PDF



- A dedicated website www.socialprescribing.wales (launching Oct 2023)

- Language Welsh/English

- Different versions for target audiences: Professional View & Public View / Easy-Read

- Future iterations will likely be needed as the landscape evolves.

- Website will facilitate data capture & dissemination of updates.

The Glossary of Terms – Navigation Table



[Home](#)
[What is Social Prescribing?](#)
[Glossary of Terms](#)
[Pathway Flowchart](#)
[All Terms A-Z](#)
[Making the Glossary](#)
[Publications](#)

[Provide Feedback](#)
[English Public](#)

Glossary of Terms

Below you will find the 36 terms included in the glossary.

(A-Z) List of Glossary Terms

[Action Planning](#)

[Asset-Based Approach](#)

[Asset Mapping](#)

[Blue Referral](#)

[Books on Referral](#)

[Buddy System](#)

[Building the Practice](#)

[Care Navigator](#)

[Community Assets](#)

[Community Support Hubs](#)

[Community & Voluntary Sector Organisations](#)

[Co-Production](#)

[Creative Referral](#)

[Digital Social Prescribing](#)

[Education on Referral](#)

[Exercise Referral](#)

[Green Referral](#)

[Health Facilitator](#)

[Holistic](#)

[Nature-Based Interventions](#)

[Person-Centred Approach](#)

[Practice-Managed Scheme](#)

[Referral](#)

[Signposting and Active Signposting](#)

[Social Cafes](#)

[Social Prescribing](#)

[Social Prescribing Approaches](#)

[Social Prescribing Champion](#)

[Social Prescribing Models](#)

[Social Prescribing Outcome Principles](#)

[Social Prescribing Pathway](#)

[Social Prescribing Practitioner](#)

[Statutory Services](#)

[Welfare Support Referral](#)

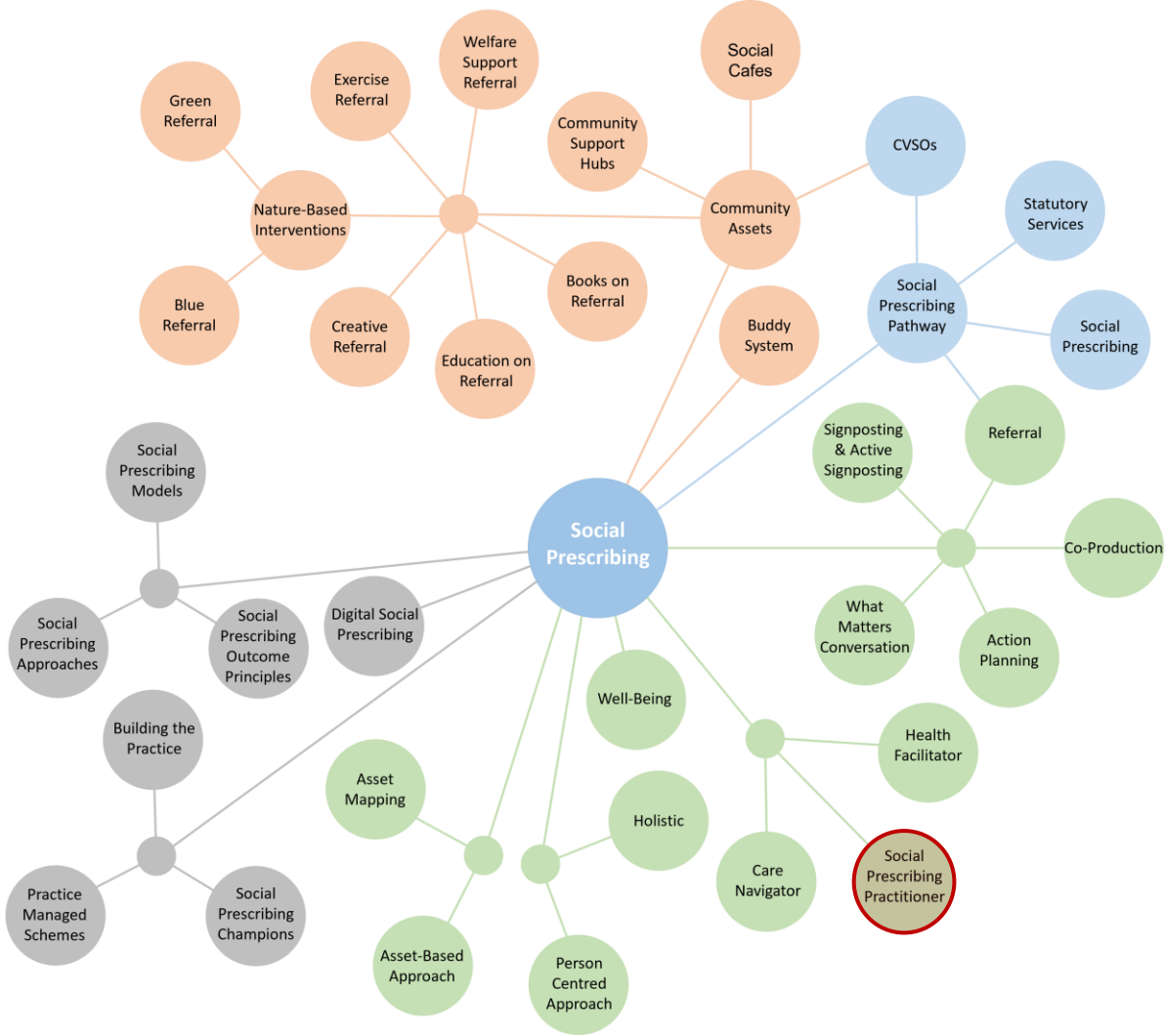
[Well-Being](#)

[What Matters Conversation](#)

The Glossary of Terms – Navigation Table




The Glossary of Terms – Navigation Table



The Glossary of Terms – Example Term



[Home](#)
[What is Social Prescribing?](#)
[Glossary of Terms](#)
[Pathway Flowchart](#)
[All Terms A-Z](#)
[Making the Glossary](#)
[Publications](#)
[Provide Feedback](#)


[English Professional](#)

Social Prescribing Practitioner

Description: **Social prescribing practitioner** is an umbrella term for someone who assists individuals with identifying their non-medical needs through a [what matters conversation](#), and helps them [co-produce](#) an [action plan](#) and access local [community assets](#) and sources of support. If they identify a potential medical need they may also refer to GP or pharmacist. **Social prescribing practitioners** will work with individuals to find activities tailored to their preferences and needs, explore barriers and challenges to attending, and encourage ongoing participation. While there are preferred terms for the **social prescribing practitioner** role within sectors, they may also be known by a variety of terms that can be specific to the organisation in which they work. **Social prescribing practitioners** can be employed by a range of different organisations, such as local authorities, health boards or Community & Voluntary Sector Organisations.

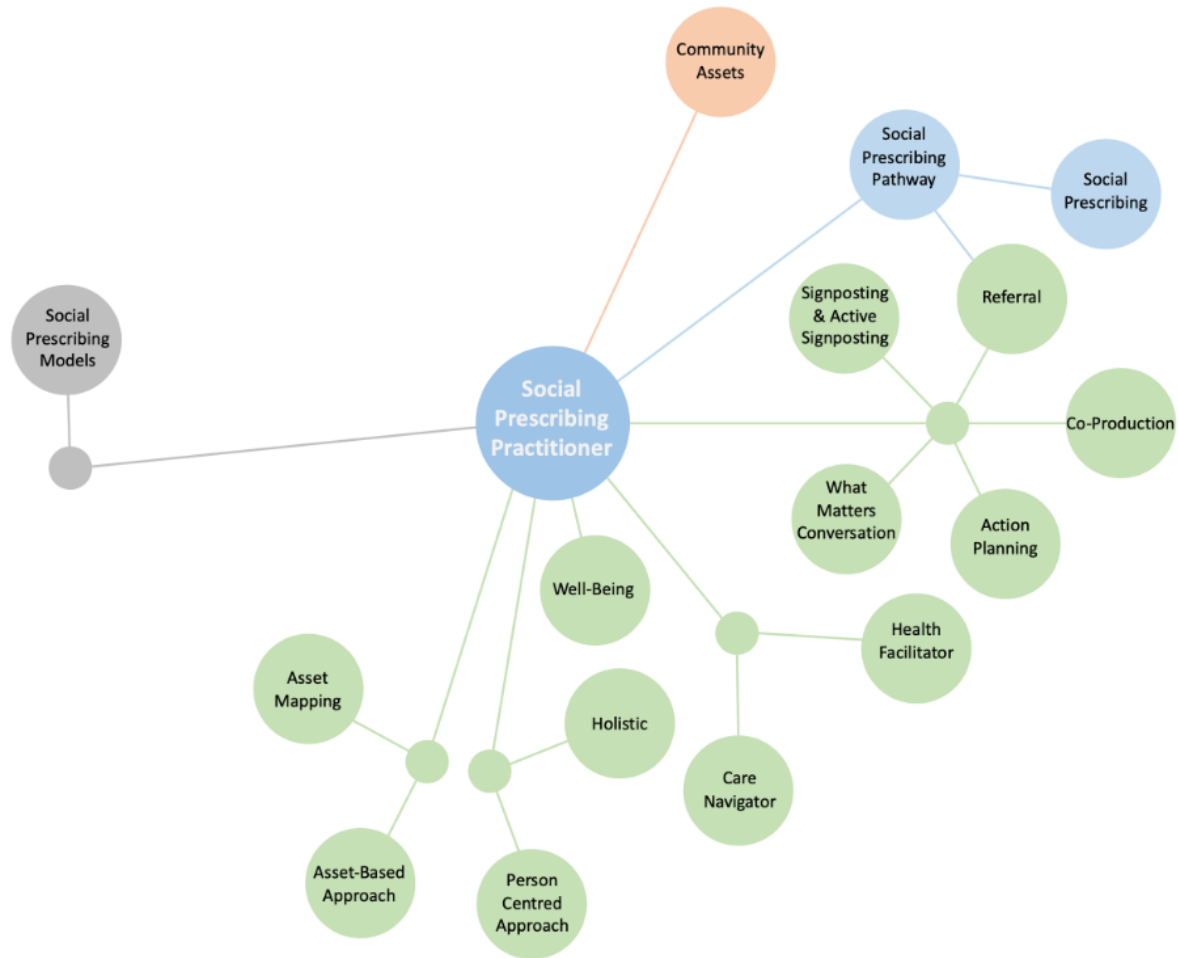
Alternative Terms: **Community connector**^{CVSO}, **community co-ordinator**^{SC}, community health champion, community link officer, community links practitioner, **community navigator**^{CVSO}, facilitator, health adviser, health broker, health connectors, link co-ordinator, **link worker**^{HC}, **local area coordinator**^{SC}, **local asset coordinator**^{SC}, non-medical link worker, referral agent, referral worker, referrer, social prescriber, social prescribing coordinator, social prescription officer, well-being advisor, well-being community co-ordinator, well-being co-ordinator, well-being links advisor, well-being worker.

Connected Terms: [Action planning](#), [asset-based approach](#), [active signposting](#), [asset mapping](#), [care navigator](#), [community assets](#), [co-production](#), [health facilitator](#), [holistic](#), [person-centred approach](#), [referral](#), [social prescribing models](#), [social prescribing pathway](#), [well-being](#), [what matters conversation](#).

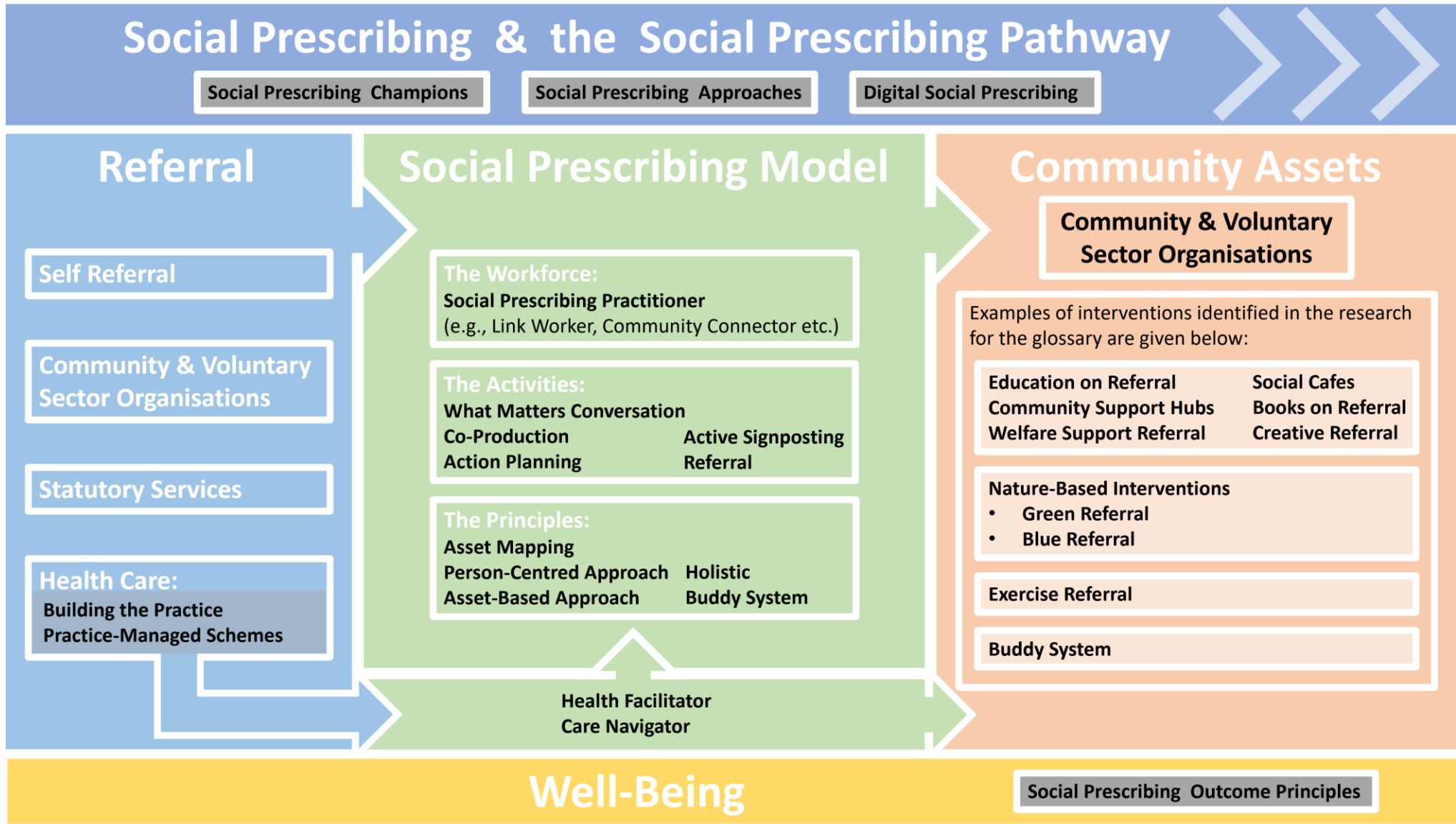
The Glossary of Terms – Connected Terms



Home What is Social Prescribing? Glossary of Terms Pathway Flowchart All Terms A-Z Making the Glossary Publications Provide Feedback English Professional

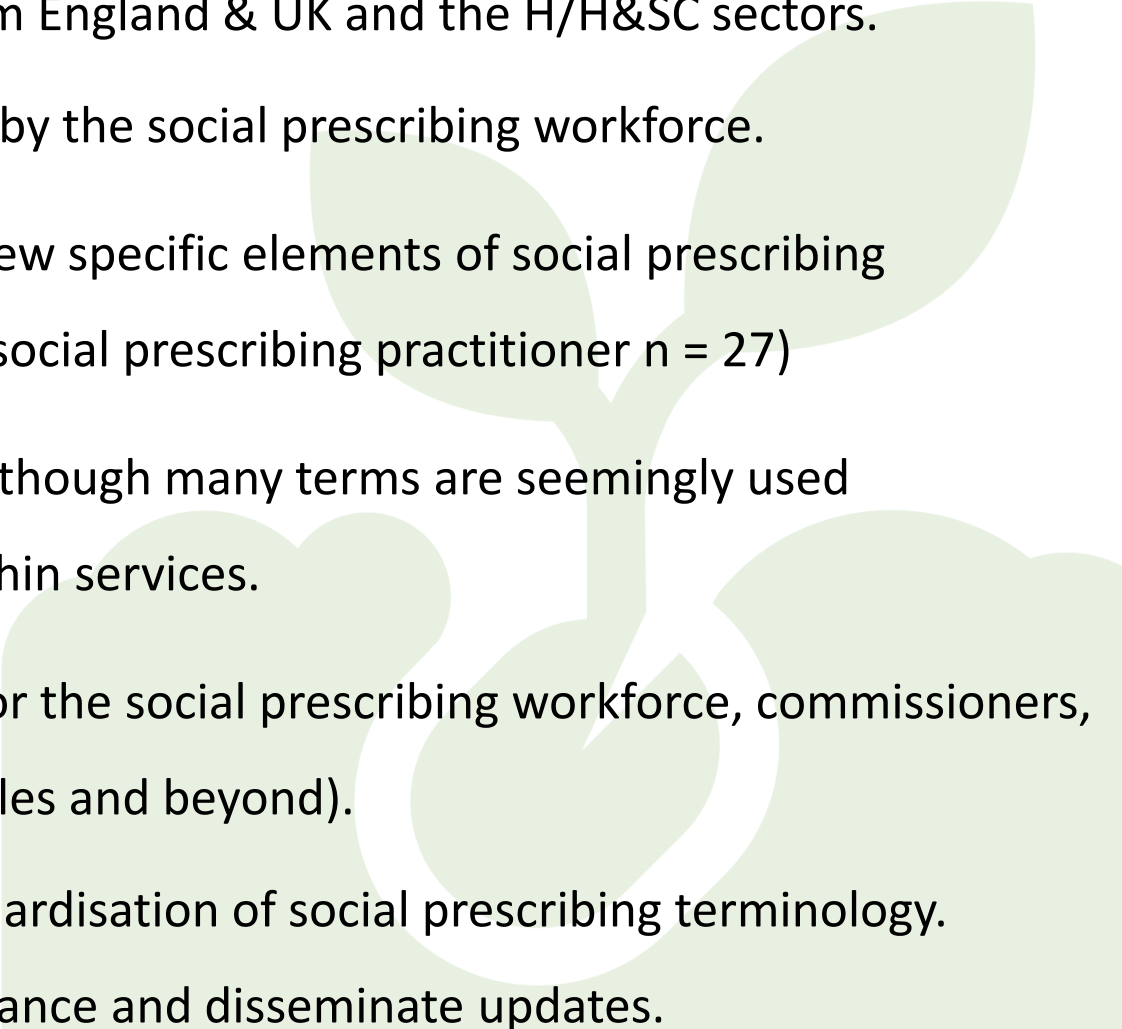


The Glossary of Terms – Pathway Flowchart



Pathway flowchart of terms (Newstead et al., Release Pending 2023).

Summary

- Largest proportion of articles and terms originate from England & UK and the H/H&SC sectors.
 - May not reflect the terminology commonly used by the social prescribing workforce.
 - Many terms identified describe/related to the same few specific elements of social prescribing (e.g., Process of social prescribing n = 28, Role of the social prescribing practitioner n = 27)
 - Some sector-specific preferences for certain terms, although many terms are seemingly used interchangeably with little standardisation across/within services.
 - The glossary provides an informative reference tool for the social prescribing workforce, commissioners, policymakers and the general public, (both within Wales and beyond).
 - Improve understanding & facilitate the standardisation of social prescribing terminology.
 - Website: capture data to ensure future relevance and disseminate updates.
- 

References & Links

- Bertotti, M., Frostick, C., Hutt, P., Sohanpal, R., & Carnes, D. (2018). A realist evaluation of social prescribing: an exploration into the context and mechanisms underpinning a pathway linking primary care with the voluntary sector. *Primary Health Care Research & Development (Cambridge University Press / UK)*, 19(3), 232–245.
- Morse, D. F., Sandhu, S., Mulligan, K., Tierney, S., Polley, M., Chiva Giurca, B., Slade, S., Dias, S., Mahtani, K. R., Wells, L., Wang, H., Zhao, B., de Figueiredo, C. E. M., Meijs, J. J., Nam, H. K., Lee, K. H., Wallace, C., Elliott, M., Mendive, J. M., ... Husk, K. (2022). Global developments in social prescribing. *BMJ Global Health*, 7(5), e008524.
- Rempel, E. S., Wilson, E. N., Durrant, H., & Barnett, J. (2017). Preparing the prescription: A review of the aim and measurement of social referral programmes. *BMJ Open*, 7(10).
- Newstead, S., Elliott, M., Cavanagh, D., Tetlow, S., Wallace, C. (Under Review). Speaking the Same Language: A Scoping Review to Identify Social Prescribing Terminology.
- Newstead, S., Pringle, A., Jenkins, B., Jesurasa, A., Wallace, C. (Release Pending 2023) *Developing an Evidence-based Glossary of Terms for Social Prescribing – A Report*. Public Health Wales, Wales School for Social Prescribing.
- Newstead, S., Pringle, A., Jenkins, B., Jesurasa, A., Wallace, C. (In Preparation) The Development of a Glossary of Terms for Social Prescribing in Wales.
- Rees S, Thomas S, Elliott M, Wallace C, 2019. Creating community assets/social capital within the context of social prescribing. Findings from the workshop held 17/7/2019. WCVA, Cwm Taf Morgannwg University Health Board, University of South Wales
- Tetlow, S., Newstead, S., Wallace, C. (In Preparation). A Scoping Review of Glossary of Terms.
- Wallace, C. et al. What Does Good Look Like? (2018) Setting its Outcome Principles and Framework for Wales. <https://www.iwa.wales/click/2018/10/social-prescribing-how-to-create-a-sustainable-journey/>.
- Wallace, C., Davies, M., Elliott, M., Llewellyn, M., Randall, H., Owens, J., Philips, J., Teichner, L., Sullivan, S., Hannah, V., Jenkins, B., & Jesurasa, A. (2021). *Understanding Social Prescribing in Wales: A Mixed Methods Study*.

My email: simon.newstead@southwales.ac.uk

www.socialprescribing.wales

Due for launch October 2023



Home What is Social Prescribing? Glossary of Terms Pathway Flowchart All Terms A-Z Making the Glossary Publications Provide Feedback English Professional

Welcome to the Glossary of Terms for Social Prescribing

Confused by social prescribing? We can help!

Welcome to the Social Prescribing Glossary of Terms website. Social prescribing is a type of support that helps to connect people to community support to better manage their health and well-being. It can help people in a lot of ways and give them increased control over their circumstances. There are a lot of things social prescribing can help with, like loneliness, physical activity, legal problems, and finances. See [What is social prescribing?](#) to find out more.

One problem with social prescribing is that it has a lot of confusing terminology. To help with this we've made a glossary of social prescribing terms to make it easier to understand. In this website, you can switch between reading modes (professional/public) and languages (Welsh/English). You will also be able to [submit anonymous feedback](#) to help improve the website and our understanding of social prescribing language in Wales. The different versions of the glossary are also available to [download as a PDF](#).

To access the website we have asked people to register and answer a few questions before using the glossary. Registration should only take a minute or two and all feedback provided, both during registration and when using the glossary will be anonymous and only viewable by our researchers and website developers. This is to help us ensure the terms and descriptions in the glossary remain current and up to date.

The animation below explains social prescribing, the glossary of terms and how to use it:

