

South Wales Social Wellbeing Scale



How to use the e-SWSWBS in Practice?

Rohit Vishwakarma

What is e-SWSWBS?

- A web-based tool for assessing social well-being
- Designed to streamline data collection and analysis
- Provides automated scoring and visualization of results

Key Features:

- **User-Friendly Interface:** Easy navigation.
- **Secure Data Handling:** Protects user privacy.
- **Automated Scoring:** Instant well-being scores.
- **Role-Based Access:** Different permissions for users.

How it works?

- Step 1: Log into the platform
- Step 2: Complete the well-being survey
- Step 3: System processes the responses automatically.
- Step 4: Results are displayed with scoring and analysis.
- Three User Roles:
 - Admin: Manages users, settings, and data reports.
 - Group Admin: Conducts assessments and reviews reports.
 - User: Completes the well-being and views personal insights.



Advantages of the Digital Survey

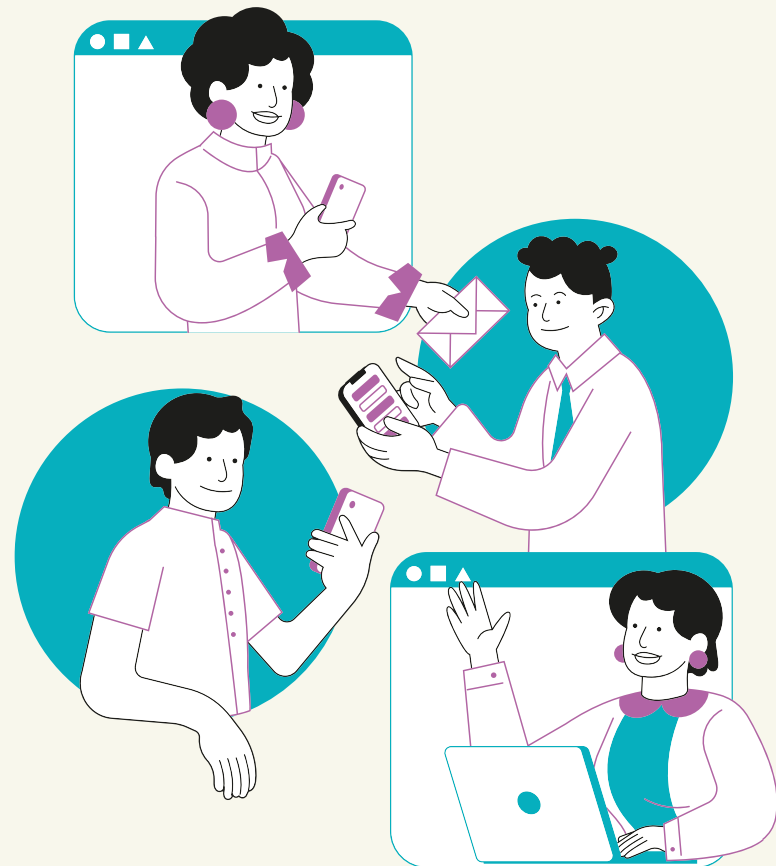
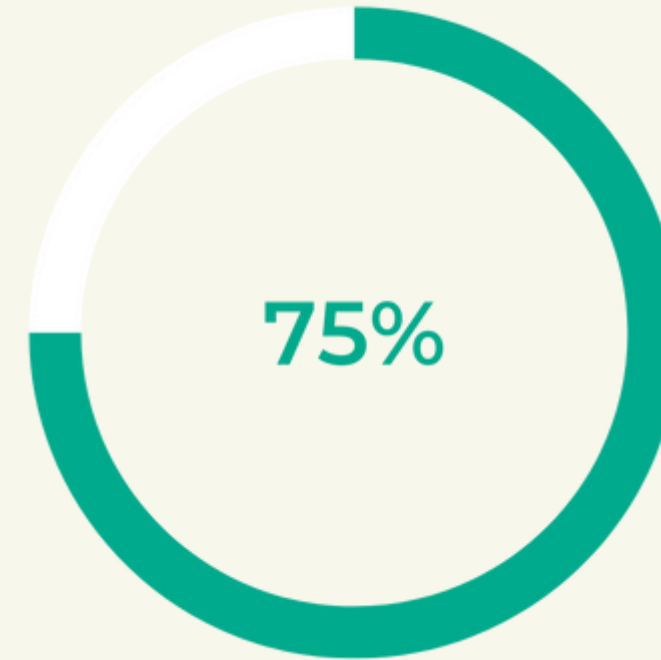
- **Accessible to more people (phones, computers)**
- **Saves time with results**
- **Environmentally friendly (paper-free).**

Digital surveys reach a wider audience quickly and allow for flexible participation, increasing response rates. They are cost-effective and offer real-time data analysis, improving efficiency and accuracy



Impact and Benefits

- Provides data to improve social programs and policies.
- Builds stronger, happier communities.
- Encourages self-awareness and growth



60%

The South Wales Social Well-being Scale helps collect important data that can improve social wellbeing. It helps in building stronger communities, encourages people to connect and be more aware of their social well-being, leading to a happier, healthier society.

What's Next?

- Expand the survey across South Wales and beyond
- Support multiple languages for inclusivity
- Add features for better engagement.
- Continuous improvements based on feedbacks



Summary & Takeaways



- e-SWSWBS simplifies well-being assessments.
- It provides a digital solution for data collection.
- Enhances efficiency, accuracy, and accessibility.
- Future updates will improve usability and reach.



Access to Survey

<https://survey-jekh.onrender.com/>

Accessing the South Wales Social Well-being Scale survey is simple and convenient:

- Available online on phones, tablets, and computers.
- Easy-to-use interface for quick and straightforward participation.
- Open to individuals across various age groups and backgrounds.





Thank You for your Attention
Open for Questions & Discussions

Rohit Vishwakarma
rohitvishwakarma.co.uk